

PARTS AND ACCESSORIES



1. Windshields

Clear abrasion-resistant, optical-grade polycarbonate is superior to current acrylic windshields in the market for excellent visibility. Features quick-release hardware for quick and easy installation or removal. Heavy-duty metal mounting brackets ensure many years of use.

a. Tall

SSV-5B403-10-00 . . . \$454.95

b. Short

SSV-5B403-30-00 . . . \$328.95

2. Folding Windshield

Features a unique quick-release hardware to fold the windshield forward (no tools required). On a nice day, take a few seconds and simply fold the top windshield forward to feel a cool breeze. When folded in open position, the windshield is supported by two arms which neatly tuck away when not in use. Durable, heavy-duty, custom-injected nylon clamps specially designed for your machine. All stainless steel hardware comes with a black finish. Made of 1/4" thick scratch-resistant polycarbonate with a special bent design for maximum rigidity. Extreme windshield rigidity in both positions.

SSV-5B403-40-FW . . . \$315.95

3. Rear Window

Easily attaches to upper frame cross tube and behind seats. Provides additional weather protection and helps reduce dust blowing. Zippered window for venting or to allow gun boot mounting. Not compatible with Kolpin Utility Gear Rail System (sold separately).

SSV-5UG04-20-BK . . . \$145.95

4. NEW! Speed Industries Billet Centre Mirror

This billet mirror features precision machined aluminum mounts and a convex mirror for optimum rear viewing. Mounts to stock roof support and can be adjusted to accommodate a variety of driver heights.

SSV-OSS56-50-38 . . . \$149.95

5. Centre Mirror

High-visibility, 4-way adjustable mirror, dual-position arm enables 2 mounting positions. Heavy-duty design. Comes with instructions and hardware.

RHN-CTMIR-00-10 . . . \$59.95

6. NEW! Kolpin® Rear/Side Mirror

Versatile rear/side mounting capability. Easy to adjust with the quick-pivot design. Wide angle convex lens provides high visibility over rough terrain.

ACC-98300-00-00 . . . \$71.95

7. Side Mirrors

Adds visibility and safety. Constructed of a durable automotive-grade ABS plastic and feature an aluminum painted mount for extreme durability in the great outdoors. Swing style arm, adjusts in four different ways. Comes with installation guide and all the necessary hardware for effortless installation.

a. Right

RHN-SDMIR-0R-10 . . . \$54.95

b. Left

RHN-SDMIR-0L-10 . . . \$54.95

8. NEW! Billet Side Mirror

Designed to match other billet items. Made from CNC-machined 6061 polished, billet aluminum. Mirror is mounted inboard to help prevent damage from trail debris. Fits left and right side, sold individually.

5B4-F6204-U0-00 . . . \$119.95



1. Baja Front Grab Bars

This tough, desert-styled front guard provides superior protection and enhanced approach angle. Replaces stock front grab bar and works with the stock front bash plate. Not compatible with Front Fender Guard (SSV-SB414-00-BK) (sold separately).

Blue

SSV-5UG70-11-L1 . . . \$429.95

Red

SSV-5UG70-11-R1 . . . \$429.95

Black

SSV-5UG70-11-00 . . . \$384.95

2. Front Bumper

Heavy-duty Sandtex powder-painted steel. Accepts optional Front Bush Bar Bumper (sold separately) for additional protection.

Fits '08-Current Rhino 700 FI SP/ SP Deluxe/SE Deluxe, '07 Rhino 660 SP

SSV-5B414-00-BK . . . \$209.95

3. Front Bush Bar Bumper

Add protection with this Front Bush Bar Bumper. Design allows Hood Guard to be opened without having to remove Bush Bar. Requires accessory Front Bumper (SSV-5B414-00-BK) to install (sold separately).

Fits '08-Current Rhino 700 FI SP/ SP Deluxe/SE Deluxe, '07 Rhino 660 SP

SSV-5B414-10-BK . . . \$63.95

4. Front Bumper

Offers more substantial protection. Honeycomb grill matches grill on unit. Top hoop has quick-detach feature to allow easy access to underhood area when unit is fitted with accessory Hood Guard (sold separately). Removal of plastic is required. Not compatible with WARN® Plow Kit or WARN Multi-Mount (both sold separately).

Fits '08-Current Rhino 700 FI/SE,

'04-'07 Rhino 660,

'06-'07 Rhino 660 SE,

'06-'09 Rhino 450,

'08 Rhino 450 SE

SSV-5UG14-00-BK . . . \$313.95

5. Rear Grab Bars

Durable steel construction with powder-coat finish. Provides protection and additional support for tailgate.

Fits '08-Current Rhino 700 FI/

SP/SP Deluxe/ SE/SE Deluxe,

'06-'07 Rhino 660/SE,

'07 Rhino 660 SP,

'06-'07 Rhino 450

Blue

SSV-5UG74-10-L1 . . . \$249.95

Red

SSV-5UG74-10-R1 . . . \$285.95

Black

SSV-5UG74-10-W1 . . . \$237.95

6. Rear Bumper

Heavy-duty 2.5" steel rear bumper. Rugged SUV styling gives extra protection to dump box area. Sandtex coated to match unit.

Fits '08-Current Rhino 700 FI/SP/

SP Deluxe/SE/SE Deluxe,

'06-'07 Rhino 660/SE,

'07 Rhino 660 SP,

'06-'07 Rhino 450

RHN-5UG41-10-BK . . . \$235.95

7. Rear Bumper

Highly engineered to flow with the contours of the Rhino. Durable powder-painted Sandtex finish.

Fits '08-Current Rhino 700 FI/SP/

SP Deluxe/SE/SE Deluxe,

'06-'07 Rhino 660/SE,

'07 Rhino 660 SP,

'06-'07 Rhino 450

SSV-5B441-00-BK . . . \$239.95



PARTS AND ACCESSORIES



1. Headlight/Hood Guard

Stainless steel insert with Tuning Fork logo adds more distinction for a durable yet refined look. Heavy-duty hinge mechanism allows quick and easy access to the underhood area. Rugged rubber clasps ensure quick hook-up and prevents rattling on the trails.
SSV-5B4HG-00-BK . . . \$437.95

2. Front Rack

Higher rails help to protect your cargo from shifting. Powder-painted Sandtex coating for durability. 60kg load limit. Must be used in conjunction with Headlight / Hood Guard (sold separately).
SSV-5B4RK-00-BK . . . \$251.95

3. Fender Guards

Steel Guards wrap around gas tank area and adjacent side to offer excellent protection. Durable for those rugged trails. Can be used with or without Overfenders. Available as Front Fender Guards, Rear Fender Guards and Centre Guards. Sold in pairs. Includes all hardware. Front Fender Guards are not compatible with Baja Front Grab Bars (sold separately).

a. Front Fender Guards

Fits '08-Current Rhino 700 FI/ SP/SP Deluxe/SE/SE Deluxe, '08-Current Rhino 450, '08 Rhino 450 SE

Black Sandtex

SSV-5B460-10-GD . . . \$149.95

b. Centre Fender Guards

Fits '08-Current Rhino 700 FI/ SP/SP Deluxe/SE/SE Deluxe, '08-Current Rhino 450, '08 Rhino 450 SE

Black Sandtex

SSV-5B460-20-GD . . . \$129.95

Red Gloss

SSV-5B460-40-GD . . . \$129.95

Blue Gloss

SSV-5B460-50-GD . . . \$129.95

c. Rear Fender Guards

Fits '08-Current Rhino 700 FI/ SP/SP Deluxe/SE/SE Deluxe, '08-Current Rhino 450, '08 Rhino 450 SE

Black Sandtex

SSV-5B460-30-GD . . . \$169.95

4. Floorboard Guards

Heavy-duty, high-lustre, zinc-plated steel for longer life and durability. Complete wraparound protection for driver and passenger floorboard area. Easy installation. Includes all hardware and instructions.
Fits '08-Current Rhino 700 FI/ SP/SP Deluxe/SE/SE Deluxe, '08-Current Rhino 450, '08 Rhino 450 SE

SSV-5B434-61-00 . . . \$199.95

Not compatible with Side Skid Plates (SSV-5UG35-10-00).

Fits '06-'07 Rhino 660/SE, '07 Rhino 660 SP, '06-'07 Rhino 450

RHN-5UG34-61-00. . . \$199.95

5. Tailgate Hinge Plate

Stainless steel plate covers rear of cargo box below tailgate for a more finished look. Durable stainless steel ensures optimum resistance to the elements.

Silver

SSV-5B441-HP-SS. . . \$29.95

1. Cargo Box Rails

Design enhances cargo box area while offering more tie-down capacity.

a. Red (Shown)

SSV-5UG56-00-R1 . . . \$178.95

Blue

SSV-5UG56-00-L1 . . . \$178.95

b. Black Sandtex

RHN-5UG60-10-CR . . \$157.95

c. Black Sandtex

SSV-5B4CR-00-BK. . . \$99.95

2. Short Cargo Box Rails

Design allows room for cargo or storage boxes.

Black Sandtex

SSV-5B4CR-SH-BK . . . \$75.95

3. NEW! Kolpin Utility Gear Rail System

The innovative design of this system helps you to customize your utility vehicle for any task or adventure. Mount your gear quickly and easily without taking up any valuable space in your bed or rack. Whether on the trails, working outdoors or hunting, the Utility Gear Rail System lets you take your gear with you. Can be used with all Kolpin bracket accessories. Not compatible with Rear Window (sold separately).

ACC-26400-YA-00 . . . \$186.95

4. NEW! Kolpin Utility Gear Rail System Mount

Add this as an additional mount to the Utility Gear Rail System for increased versatility. This highly engineered design allows this 90-degree plate to be utilized in 3 different positions providing infinite possibilities with the gear you mount and how you mount it.

ACC-26500-00-00 . . . \$42.95

5. NEW! Speed Industries Tie-Down Track System

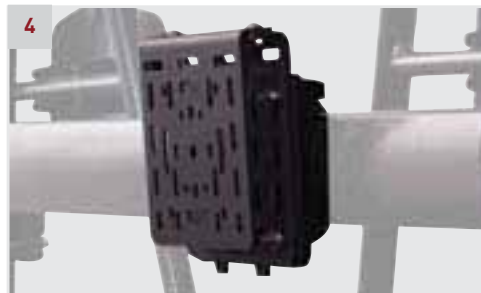
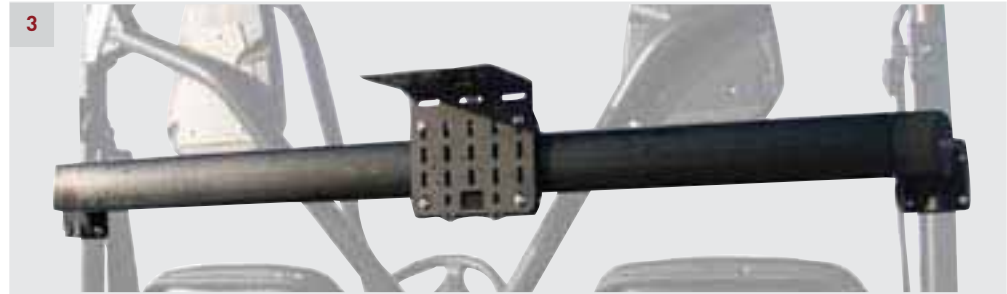
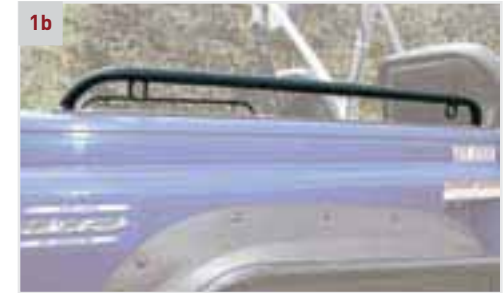
This quick and easy system allows you to secure your cargo no matter what the shape or size. Mount on either bed sides or floor of bed. Extruded aluminum, powder-coated tracks allow you to place tie-down clips in 1" increments along the bed sides. Two tracks, backing plates, and two tie-down clips are included for easy installation. Working load of 700 lb and a maximum rated capacity of 1500 lb. Drilling required. Extra tie-down clips are available (sold separately). 26" long

SSV-OSS56-50-35 . . . \$110.95

6. NEW! Speed Industries Tie-Down Track Clips

Sold in pairs.

SSV-OSS56-50-36 . . . \$17.95



PARTS AND ACCESSORIES



1. NEW! Kolpin Gear Lock and Load System

Quick interchangeable system that provides complete accessory customization. Attach, detach or change out accessories, quick and easy without tools. Includes a stationary base plate that mounts directly to your Rhino rack or to the Kolpin Utility Gear Rail System (sold separately). Attach your accessories to the included mounting plate, then slide in or slide out of the base in seconds. Accommodates all Kolpin bracket accessories, gear grips, gun boots, and fuel packs.

ACC-26300-00-00 \$38.95

2. NEW! Kolpin Fuel Pack Jr. Assembly

Mounts to any Rhino, garage, trailer, camper and more. Innovative wide stance design offers stability during storage and features moulded handles for easy transportation and filling. EPA compliant. Self-venting and self-closing spout is CARB compliant with heavy rubber gasket for spillproof operation. 1/4 turn action knob allows for quick and easy removal and attachment. Includes bracket to mount on front or rear of Rhino.

**3.78L
ACC-89735-00-00 \$98.95**

3. Side Storage Box

This tough, yet lightweight storage box can easily be installed on either side of the cargo bed or in conjunction with the Moulded Cargo Box Lid. Integrated mounting points for LED Dome Light (sold separately) for increased visibility. Lockable lid latch for extra security. 40-lb weight capacity with 8.92 gallons of storage area. Order two if Side Storage Box is desired for placement in both access openings of Moulded Cargo Box Lid. Single Side Storage Box shown installed in Moulded Cargo Box Lid (sold separately).

SSV-5B415-10-00 \$224.95

4. Underseat Storage Bin

Durable roto-moulded black polyethylene dry storage bin includes lid and tray. 1,570 cubic inches of dry storage space. Tray area has stainless steel handle and 290 cubic inches of portable storage for tools or other easy-access items. Nylon strap with buckle system for quick secure or handling. Rubber feet minimizes rattling.

*Fits '04-'07 Rhino 660,
'07 Rhino 660 SP,
'06-'07 Rhino 660 SE,
'06-'07 Rhino 450*
SSV-5UG27-BN-BK \$139.95

5. Rear Cooler Trunk

Black roto-moulded plastic construction with foam-filled insulated body. Two large wet/dry storage areas (1,825 cubic in) with drain plugs. One wet/dry storage area (635 cubic in) with removable lid, storage tray and drain plug. Two gas-assist shocks hold the lid open for easy access. Two draw-tight latches keep the lid secure while operating the vehicle. Convenient storage for separating ice and beverages from dry goods.

SSV-5B4C0-0L-ER \$439.95

6. Crossover Storage Box

This heavy-duty, moulded plastic tool box fits across the width of the cargo bed to carry your essential equipment. Strut that prevents the lid from closing at inopportune times. Integrated mounting points for LED Dome Light (sold separately) for increased visibility. Two lockable lid latches for security. 100-lb weight capacity with 26.79 gallons of storage area.

SSV-5B452-10-00 \$325.95

7. NEW! Moulded Cargo Box Lid

High durability roto-moulded dump box cover with hinge door operation for easy access from the top. Double wall, foam injection for rugged good looks and strength. Helps to keep cargo protected from the elements.

**Black
SSV-5UG16-00-00 \$281.95**

8. NEW! Cycle Country Tailgate Xtender

This bed extender not only looks cool but also increases the storage capability of the bed of a Rhino by 30%. When pivoted out, it adds valuable cargo space or when pivoted in, it securely holds (3) 5-gallon buckets in place.

**Black
SSV-0SS56-51-30 \$239.95**

1. Moulded Cargo Box Lid

Protect your cargo from the environment while on the trail with this sturdy, yet lightweight bed cover. Features two large access doors to the cargo bed. The box access doors can easily be removed and Side Storage Boxes (sold separately) can be installed. Integrated mounting points for the LED Dome Light (sold separately) for increased visibility.

SSV-5B416-10-00 . . . \$356.95

2. Spare Tire Carrier

SUV-style swing-out design. Quick-release stainless steel pins allows for quick easy access to cargo area. Carrier accepts stock wheels only. Tire not included. Must be used in conjunction with Canopy Frame (sold separately).

SSV-5B453-00-BK . . . \$252.95

3. Canopy Frame

Heavy-duty, powder-painted, steel frame offers excellent support for Canopy (sold separately). Shown with Spare Tire Carrier (sold separately). Not compatible with Moulded Sun Top or Sport Sun Top Kit (5B4-K8314-00-KT), each sold separately.

SSV-5B4CF-00-BK . . . \$438.95

4. NEW! Kolpin Double Gun Boot Mount

Safely transports two Kolpin Gun Boots. Heavy gauge steel with multiple attachment points allows quick access to your firearms. Sturdy bracket mounts to Rhino. Does not interfere with dump box function.

ACC-20036-00-00 . . . \$207.95

5. Kolpin Gun Boot IV

Polyethylene shell provides heavy-duty protection. Anatomically designed to accommodate left- and right-hand bolt action rifles or shotguns. Removable and replaceable Impact lining for shock absorption and protection. Room for 50mm scopes or rifles with slings attached. Gun Boot Mount required (sold separately).

Black

ATV-20051-00-00 . . . \$78.95

Camo

ATV-20071-00-00 . . . \$144.95

6. Kolpin Gun Boot 5.0 Impact

Polyethylene shell provides heavy-duty protection. The universal fit built-in bracket adjusts without the use of any tools. Removable and replaceable Impact lining for shock absorption and protection. Room for 50mm scopes or rifles with slings attached. Does not require an additional mounting bracket.

ATV-20095-00-00 . . . \$153.95

7. NEW! Kolpin Gun Boot 6.0 Impact

Easily fits firearms of up to 51". Provides space for the largest scopes and pistol grip style stocks. Provides easier access to your firearm with the hinged, hatchback design featuring a snap close cover with locking capability. Requires Kolpin Utility Gear Rail System and Kolpin Gear Lock and Load System (each sold separately).

ACC-20025-00-00 . . . \$85.95



PARTS AND ACCESSORIES



1. Gun Boot Mount Base Kit

Required to mount Gun Boot IV or Gun Boot 6. Mounts to rear of cab area. Includes a single gun boot mount and special boot sleeve.

Fits '08-Current Rhino 700 FI/ SP/SP Deluxe/SE/SE Deluxe, '07-Rhino 660/SP/SE, '08-Rhino 450 SE
SSV-5UG61-20-KT . . . \$259.90
Fits '04-'06 Rhino 660, '06 Rhino 660 SE, '06 Rhino 450

SSV-5UG61-00-KT . . . \$229.90

2. Gun Boot Mount Option Kit

Allows mounting of second Gun Boot. Mounts onto Gun Boot Mount Base (sold separately). Includes single gun boot mount bracket attachment and special boot sleeve.

SSV-5UG62-00-KT . . . \$169.90

3. NEW! Kolpin Saw Press Mount

Transports your chainsaw securely and safely on your unit. Features a cam-over locking mechanism so the swing door cannot open inadvertently while traversing rough terrain. Tough rubber pads provide a cushion for the powerhead and protect the chainsaw bar and chain during transport.

ACC-20044-00-00 . . . \$99.95

4. NEW! Kolpin Gear Grips

Keep your gun, shovel, fishing pole, ice auger and any other items secure for the ride and easily within reach. Gear grips are textured with the Kolpin "Rhino Teeth", rubberized jaws for superior grip and cushion support while clamping your gear firmly with a ratcheting action. Release the hold with a push of the button.

ACC-20085-00-00 . . . \$60.95

5. NEW! Kolpin XL Gear Grips

Heavy-duty design will keep your firearm or other gear securely in place and cushion it from any jolts or shocks. Provides superior gripping power and cushioning support that reduces side-to-side movement. Strong, flexible static grips and rubber straps securely hold tools and gear of various configurations. Multi-angle design allows for a rotation of 360 degrees without tools. Flexible double grip tilts from 45 degrees to 90 degrees. Mounts to any horizontal or vertical surfaces. Sold in pairs.

Double Gear Grips

ACC-21515-00-00 . . . \$86.95

Single Gear Grips

ACC-21510-00-00 . . . \$49.95

6. NEW! Flashlight Holder

Features nylon straps with easy hook-and-loop attachment. Holds any standard "D-cell" battery flashlight (not included).

Black

5B4-K830X-V0-00 . . . \$29.95

7. NEW! Water Bottle Holder

Features nylon straps with hook-and-loop for mounting easily to the frame tubes. Holds any standard 12~16 oz. water bottle.

Black

5B4-K83A0-V0-00 . . . \$39.95

1. Power Sprayer

Roto-moulded plastic construction. Easily installs under driver's seat. Reservoir holds 3.75 gallons of water. Self-priming, 12-volt pump operates at 60 p.s.i. Mounting location provides convenient access to power switch and brass quick-connect. Includes 8-foot coiled hose and durable glass-filled nylon spray gun. Convenient accessory for cleaning radiators and windshields in remote locations.

SSV-5B4PO-WR-SP . . \$417.95

2. Headlight Guards

High-molecular-weight plastic construction provides protection.

SSV-5UG10-00-00 . . . \$69.95

3. Taillight Guards

Adhesive mount plastic guards are styled to match the Headlight Guards.

SSV-5UG53-30-00 . . . \$55.95



4. Taillight Guards

SUV-style rear taillight guards. Rugged enhancement and protection. Sandtex coated to match unit.

Fits '08-Current Rhino 700 FI/ SP/SP Deluxe/SE/SE Deluxe, '06-'07 Rhino 660/SE, '07 Rhino 660 SP, '06-'07 Rhino 450

RHN-5UG60-40-GD . . \$199.95

5. Taillight Guards

Improved design offers more protection to rear lights and dump box. Durable powder-painted Sandtex finish. Must be used in conjunction with Rear Bumper (SSV-5B441-00-BK), sold separately.

Fits '08-Current Rhino 700 FI/ SP/SP Deluxe/SE/SE Deluxe, '06-'07 Rhino 660/SE, '07 Rhino 660 SP, '06-'07 Rhino 450

Black

SSV-5B4TG-00-BK . . \$158.95

6. Overfenders

Tough, durable composite protects against water, mud and trail debris. Includes front and rear overfenders and all necessary hardware.

SSV-5B466-00-00 . . \$301.28

7. Radiator Guard

Replaces stock plastic guard with a lightweight but durable aluminum piece.

Fits '08-Current Rhino 700 FI/ SP/SP Deluxe/SE/SE Deluxe, '07 Rhino 660/SP/SE, '07-Current Rhino 450, '08 Rhino 450 SE

Aluminum

SSV-5UG20-10-00 . . \$123.95

Sport Radiator Cover

(Not shown) Comes stock on the Rhino 660 Sport Edition.

Fits '08-Current Rhino 700 FI/SE, '06-'07 Rhino 660/SE, '06-Current Rhino 450, '08 Rhino 450 SE

Black Plastic

5UG-F2858-00-KT . . . \$25.35



PARTS AND ACCESSORIES



1

1. Ram Beverage Holder
Handy swivel beverage holder.
ATV-RAMB1-32-R0 . . . \$65.95



2

2. NEW! Techmount Mounting System
Ride with your electronic devices in view with this handy accessory. Machined from 6061-T6 aluminum to precise tolerances with a durable anodized finish. Compatible with GPS, XM/MP3, mobile phone, toll transponder, camera, video.
SSV-81002-00-BK . . . \$90.95



3

3. NEW! Techmount iPod®/ Cell Phone Holders
Adjustable cradle for mounting iPod or cell phone models. This kit may be mounted directly to any standard Techmount Top Plate or to the Quick Change Adapter, both sold separately.
Small
ABA-HR123-00-00 . . . \$31.95
Large
ABA-HR253-10-00 . . . \$31.95



4

4. NEW! Techmount Adaptor Plate
Makes changing accessories a snap. Mount an electronic device to the Quick Change Adaptor, then slide it onto a Techmount Top Plate (sold separately) and it locks into place with a spring loaded locating pin. Simply press the pin to release the adapter and slide off to remove.
ABA-60003-00-00 . . . \$18.95

5. Ram GPS/Communicator Holder
Holds a GPS, cell phone or CB/Walkie-talkie. Comes complete with all necessary hardware.
ATV-RAMB1-20-00 . . . \$91.95

6. Dash Trim Accent
Add some additional style to the dash of your Rhino with these easy-to-install dash trim kits (driver side shown). Patterns match the accessory Sport Steering Wheel Inserts (sold separately).
Brushed Aluminum (shown)
SSV-5B442-30-A1 . . . \$109.95
Carbon Fibre
SSV-5B442-30-C1 . . . \$109.95



5



6

7. Floor Mat Set
Custom shaped for high-quality fit. Durable Nyracord rubber with unique Rhino design.
5B4-F740B-V0-00 . . . \$89.95

8 NEW! Billet Shift Knob
Designed to match other billet items. Made from CNC-machined 6061 polished, billet aluminum.
Silver
5B4-E8170-V0-00 . . . \$75.95

9. Custom Shift Knob
Designed to match the brushed aluminum Dash Trim Accent and Sport Steering Wheel Insert (both sold separately).
SSV-5B442-11-A1 . . . \$59.95

10. NEW! Speed Industries Pistol Grip Shift Knob
For anyone looking for that custom look, these shift knobs offer aggressive styling. Styled construction provides an excellent grip and is easily installed.
Leather with Carbon Fibre Insert
a. SSV-OSS56-50-39 . . . \$25.95
Leather with Mesh Insert
b. SSV-OSS56-50-40 . . . \$25.95



7



8



9



10

1. NEW! Speed Industries Billet Gas Cap

This polished billet aluminum gas cap uses the stock breather and seal. Machined notches provide for an easy grip.

SSV-OSS56-50-49 . . . \$89.95

2. NEW! Speed Industries Custom Steering Wheels

Wrapped in smooth leather for a great feel and a brushed aluminum finish or chrome for a custom look. Requires Speed Industries Billet Steering Wheel Hub Adaptor (sold separately).

a. Performer Wheel –

Brushed Aluminum

12-3/4" diameter

SSV-OSS56-50-45 . . . \$149.95

b. Profiler Wheel –

Brushed Aluminum/Chrome

13" diameter

SSV-OSS56-50-46 . . . \$149.95

3. NEW! Speed Industries Billet Steering Wheel Hub Adaptor

Polished billet aluminum construction with a scalloped mounting surface and contoured design for a great look. Designed and styled to work with Speed Industries steering wheels.

SSV-OSS56-50-48 . . . \$121.95

4. NEW! Speed Industries Steering Column Cover

This polished stainless steel cover is designed and styled to work with the Speed Industries Billet Steering Wheel Hub Adaptor and Custom Steering Wheels. Easily installs and completes the custom look of your wheel. Shown with Wheel Hub Adaptor (sold separately).

SSV-OSS56-50-47 . . . \$48.95

5. Sport Steering Wheel

The perfect accessory to complement painted accessories or custom paint. These steering wheels are colour matched to your Rhino and painted accessories. Add the Sport Steering Wheel Inserts (sold separately) to complement these steering wheels.

Red

SSV-5B442-40-R1 . . . \$65.95

Grey

SSV-5B442-40-S1 . . . \$65.95

Blue

SSV-5B442-40-L1 . . . \$65.95

6. Sport Steering Wheel Insert

These Steering Wheel Inserts work with the stock 3-spoke steering wheels on the '07-'09 Special Edition Rhinos and with the accessory Sport Steering Wheels.

a. Carbon Fibre (shown)

SSV-5B442-41-C1 . . . \$32.95

b. Brushed Aluminum

SSV-5B442-41-A1 . . . \$32.95

7. NEW! Billet Brake/Throttle Pedal Set

Designed to match other billet items. Made from CNC-machined 6061 polished, billet aluminum.

Silver

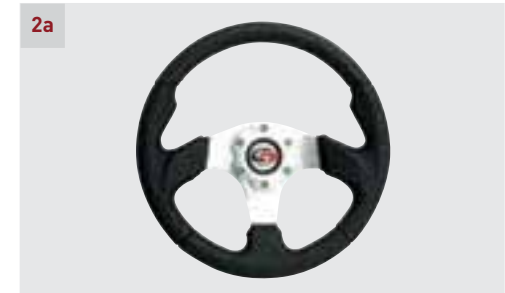
5B4-F721G-V0-00 . . . \$209.95

8 NEW! Billet Light Switch Knob

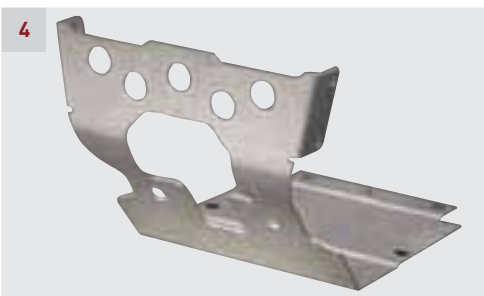
Designed to match other billet items. Made from CNC-machined 6061 polished, billet aluminum.

Silver

5B4-H25A0-V0-00 . . . \$29.95



PARTS AND ACCESSORIES



1

1. Rimrings®

Prevent dented steel rims due to aggressive riding in rocky terrain. Easily installed. Made from ultra durable zinc anodized spring steel.

*Fits '08-Current Rhino 700 FI,
'04-'07 Rhino 660,
'06-'09 Rhino 450*

ATV-RIMRG-12-00 . . . \$27.95

2. Front & Rear Skid Plate Set

Computer-controlled, laser-cut, cold-rolled steel. 14-gauge for durability and strength. Zinc clear chromate coating. Easy installation.

*Fits '08-Current Rhino 700 FI/
SP/SP Deluxe/SE/SE Deluxe,
'08-Current Rhino 450,
'08 Rhino 450 SE*

SSV-5B434-00-00 . . . \$159.95

*Fits '06-'07 Rhino 660,
'07 Rhino 660 SP,
'06-'07 Rhino 660 SE,
'06-'07 Rhino 450*

RHN-5UG34-00-00 . . . \$197.95

3. Front Bash/Frame Skid Plate

Constructed of heavy-duty 5052 aluminum plate.

*Fits '08-Current Rhino 700 FI/
SP/SP Deluxe/SE/SE Deluxe,
'06-'07 Rhino 660/SE,
'07 Rhino 660 SP,
'06-'09 Rhino 450,
'08 Rhino 450 SE*

Aluminum

SSV-5UG31-10-00 . . . \$178.95

4. Baja Front Bash Skid Plate

Specifically designed to provide additional protection when using the Baja Front Grab Bar (sold separately).

Aluminum

SSV-5UG31-30-00 . . . \$191.95

5. Side Skid Plates

Guards help protect rear drive shafts. Set of two.

*Fits '08-Current Rhino 700 FI/
SP/SP Deluxe/SE/SE Deluxe,
'08-Current Rhino 450,
'08 Rhino 450 SE*

Aluminum

SSV-5B435-10-00 . . . \$253.95

*Fits '08-Current Rhino 700 FI/
SP/SP Deluxe/SE/SE Deluxe,
'08-Current Rhino 450,
'08 Rhino 450 SE*

Steel

SSV-5B435-10-ST . . . \$129.95

*Fits '04-'07 Rhino 660,
'07 Rhino 660 SP,
'06-'07 Rhino 660 SE,
'06-'07 Rhino 450*

Not Compatible with Floorboard Guards (RHN-5UG34-61-00).

Aluminum

SSV-5UG35-10-00 . . . \$255.95

1. Rear Bash Plate

Strong yet lightweight 5052-H32 aluminum construction. All hardware and instructions are included.

Aluminum

SSV-5UG36-00-00 . . . \$117.95

2. Front A-Arm Skid Plates

Provide excellent protection to Front A-Arms. Set of two. Fits '08~Current Rhino 700 FI/ SP/SP Deluxe/SE/SE Deluxe

Aluminum

SSV-5B432-00-00 . . . \$164.95

Fits '08~Current Rhino 700 FI/ SP/SP Deluxe/SE/SE Deluxe

Black Steel

SSV-5B432-ST-00 . . . \$89.95

Fits '04~'07 Rhino 660, '07 Rhino 660 SP, '06~'07 Rhino 660 SE, '06~'09 Rhino 450, '08 Rhino 450 SE

Aluminum

SSV-5UG32-00-00 . . . \$189.95

3. Rear A-Arm Skid Plates

Provide excellent protection to Rear A-Arms. Set of two. Fits '08~Current Rhino 700 FI/ SP/SP Deluxe/SE/SE Deluxe

Black Steel

SSV-5B433-ST-00 . . . \$89.95

Fits '08~Current Rhino 700 FI/ SP/SP Deluxe/SE/SE Deluxe

Aluminum

SSV-5B433-10-00 . . . \$156.95

Fits '04~'07 Rhino 660, '07 Rhino 660 SP, '06~'07 Rhino 660 SE, '06~'09 Rhino 450, '08 Rhino 450 SE

Aluminum

SSV-5UG33-10-00 . . . \$139.95

4. Drive Shaft Housing Plate

Lightweight, 5052-H32 aluminum construction. Fits '04~'07 Rhino 660, '07 Rhino 660 SP, '06~'07 Rhino 660 SE, '06~'07 Rhino 450

Aluminum

SSV-5UG37-10-00 . . . \$147.95



PARTS AND ACCESSORIES

1



1. NEW! Speed Industries H.I.D. Headlight Upgrade Kit

This "plug-and-play" H.I.D. (High Intensity Discharge) headlight upgrade kit plugs directly into the factory headlight housing and produces up to 6 times the light of the factory halogen bulb. 7K H.I.D. bulbs provide more light output at a reduced amperage draw and offer a true 35-watt system. The electronics are fully potted for durability. Includes all hardware required for installation.

Fits '08-Current Rhino 700 FI/ SP/SP Deluxe/SE/SE Deluxe, '07 Rhino 660/SE/SP, '07-Current Rhino 450, '08 Rhino 450 SE
SSV-0SS56-50-41 . . . \$339.95

2. LED Backup Lights

Auxiliary LED lights that mount to the Rear Bumper. Includes all required wiring and brackets to help you light up the path behind you. Must be used with accessory Rear Bumper (sold separately). Sold in pairs.
SSV-5UG54-20-00 . . . \$108.95

2



3



3. LED Dome Light

This battery-operated LED dome light provides ample light to help illuminate the cab of your Rhino. Can also easily detach and be used as an emergency light. Attaches to any Yamaha Sun Top, Crossover Storage Box, Side Storage Box and Moulded Cargo Cover. Six high-powered LED lights offer ample lighting and run for hours on only 4-AA batteries. Large, easy-to-use ON/OFF button.

SSV-5B411-20-00 . . . \$85.95

4. LED Taillight

Replace your stock taillights with clear lenses and LED's that provide bright red taillight and brake light function. Integrated white reverse lights.

Fits '08-Current Rhino 700 FI/ SP/SP Deluxe/SE/SE Deluxe, '05-'07 Rhino 660, '07 Rhino 660 SP, '06-'07 Rhino 660 SE, '06 Rhino 450
SSV-5UG54-40-00 . . . \$219.95

4



5



6



7



5. PIAA® Lights

High-performance 60mm (2.4") diameter round light kit with long range beam pattern. Includes two lamps, switch and wiring. PIAA Light Mounts are required for installation of these lights (sold separately).

ABA-73462-00-00 . . . \$230.95

6. PIAA Light Mounts

Required to mount PIAA Lights. Features sturdy metal construction and easy installation. Fits onto front rack tubing. Sold in pairs.

ABA-74102-00-00 . . . \$44.95

7. Ram Spotlight

Heavy-duty, rubber-encased spotlight includes coiled cable for convenience.

ATV-RAMB1-52-R0 . . . \$99.95

1. NEW! Amplified Plug 'n Play Speaker Bar

100W amplified. Plug 'n Play with iPod or MP3. No radio/CD player necessary. Includes separate docking system to hold your iPod or MP3 player. Includes 12' power cable with connector and 12' auxiliary cord with iPod/MP3 connector. Features include 2-channel, 3-way, 200W maximum speaker system including: (2) 6" woofers, (2) 2" mid-range and (2) 1" tweeters. Textured, weather-resistant, high-impact, roto-moulded plastic housing. Easy installation. Requires Speaker Bar Mount (sold separately). **SSV-5B443-40-01 . . . \$472.95**

NEW! Speaker Bar Mount

(not shown)
Speaker Bar mounting bracket. Heavy-duty, powder-coated steel. **SSV-5B443-MT-BK . . . \$16.95**

2. Unamplified Speaker Bar

Two-channel, three-way, 20W maximum speaker system. Includes two 6" woofers, (2) 2" mid-range and (2) 1" tweeters. Textured, weather-resistant, high-impact, roto-moulded plastic housing. Easy installation. **SSV-5B443-20-00 . . . \$252.95**

3. Wedge Speaker System

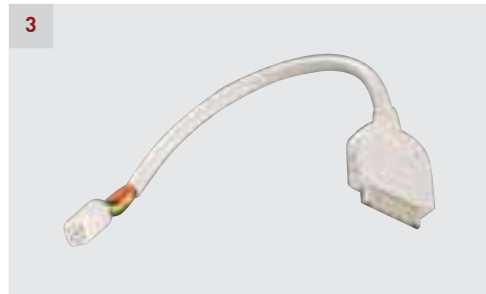
200W maximum power, 90W RMS. Includes two 6" woofers, and two 1" super dome tweeters. High-capacity cross-over, poly-carbon weather-resistant cones. Butyl rubber surround, and a 24-oz strontium magnet. Frequency response: 55 Hz-20,000 Hz. Sensitivity: 94.9dB 1m/1W, 4 ohms. **SSV-5B443-30-00 . . . \$199.95**

4. NEW! Under Dash Audio Housing & Speakers

Exclusively engineered stereo housing comes complete with two premium quality "Prospect electronics" 5" diameter 40W marine-grade speakers. Durable housing is rotationally moulded for strength and a contoured fit. Stainless steel speaker and stereo mounting plates and hardware ensure maximum resistance to the elements while giving the product a distinctive appearance of quality. Speakers are pre-wired and stereo plate is equipped with an adjustable bracket to allow for easy installation. Mounts under dash for a clean fit. Also includes an amplified radio antenna and foam seal for weather resistance. Player unit not included. Marine-grade player unit recommended. **SSV-5UG60-01-SP . . . \$328.95**



PARTS AND ACCESSORIES



1. Audio System

Enhance your adventure with this audio system developed specifically for the Rhino. Our exclusive design has features that no other audio system on the market can offer. Speed sensitive volume adjustment enables the radio to increase volume at high RPMs and decrease at low. Solid state and water-resistant, provides exceptional durability in the harsh Rhino environment. Integrated styling that features large, simple-to-operate backlit buttons that provide an easy user interface in daytime and low light conditions. Standard features include FM/AM/WB radio with AUX input for media players. Has five station presets, seek and manual tuning, and bass and treble control. Four channel 28 watts per channel output. Includes single DIN mounting plate (audio housing and antenna sold separately). Additional add-on features include XM® Satellite and antenna, CB and iPod cable that enables charging and input control (all sold separately). Required Under Dash Speaker Housing and Speakers (sold separately). Audio player shown, not included.

SSV-5B443-10-00 . . . \$594.95

2. XM Satellite Module

Listen to your favourite commercial-free music, sports, news and talk radio shows in 170 crystal-clarity channels with this XM Satellite Radio Module that fully integrates with the Rhino Audio System. Display provides information regarding artist name, song title, and channel information. Includes module, antenna and all connecting hardware. Subscription to XM Satellite service is required.

SSV-5B443-10-10 . . . \$571.95

3. iPod Cable

Listen to your favourite tunes with this Apple® iPod adapter for your Rhino Audio System. Allows you to play and control your iPod through your receiver. Displays song, title and album information. The iPod's battery charges while connected. Seven-wire interface to any iPod with 30-pin interface connector. Can be used with all currently available iPod models except the Shuffle™. (iPod not included.)

SSV-5B443-10-15 . . . \$35.95

4. Auxiliary Input Cable

Allows connection of portable media player using the media player's headphone output. Not compatible with iPod.

SSV-5B443-10-16 . . . \$24.95

5. NEW! Heater Craft Ducted Hydronic Heater System

High output, 3-speed ducted heater/defroster system, mounts out of the way of legs and feet. Two 2" adjustable vents direct the heat to the foot area (independent driver and passenger) and one 5" long defrost vent to the windshield (if so equipped). Kit includes everything needed, plus easy step-by-step instructions for a complete worry-free installation. Est. BTU/H: 20,000 -12V DC 3-speed fan - Air Flow: Exceeds 350cfm (cubic feet per minute). Fits '08-Current Rhino 700 FI/SP/SP Deluxe/SE/SE Deluxe

SSV-OSS56-50-92 . . . \$479.95

Fits '04-'07 Rhino 660, '06-'07 Rhino 660 SE, '07 Rhino 660 SP, '06-'09 Rhino 450, '08 Rhino 450 SE

SSV-OSS56-50-89 . . . \$499.95

1. NEW! Speed Industries Headrest Cover by Beard

Custom pleated and stitched. Durable vinyl construction. Each Headrest Cover is sold separately.

Fits '08-Current Rhino 700 FI/ SP/SP Deluxe/SE/SE Deluxe, '07 Rhino 660/SE/SP, '07-Current Rhino 450, '08 Rhino 450 SE

- a. Left SSV-0SS56-50-43 . . . \$41.95
- b. Right SSV-0SS56-50-44 . . . \$41.95

2. NEW! Speed Industries Seat Cover by Beard

Durable vinyl construction with spring-loaded tension wire that secures the cover to the stock seat and provides a tight conforming fit. 1/2" thick foam lines the entire cover for rider comfort. Custom design features pleating and custom stitching. Headrest Covers sold separately. SSV-0SS56-50-42 . . . \$215.95

3. Seat Covers

This seat cover set has a coloured centre section made of durable yet comfortable SurLast fabric with Rhino logo embroidery and black neoprene side panels. Includes two seat covers. Headrest not included and not available.

- a. Blue SSV-5UG25-20-03 . . . \$260.95
- b. Grey SSV-5UG25-20-01 . . . \$260.95
- c. Red SSV-5UG25-20-02 . . . \$260.95

4. Seat Cover with Headrest Cover

Neoprene construction with extra padding for additional comfort. Includes one seat cover and one headrest cover (order two if converting both seats). *Fits '04-'07 Rhino 660, '06-'07 Rhino 450, Realtree Hardwoods® HD Camouflage* SSV-5UG24-00-HD . . \$131.95

5. NEW! Door Accents

Heavy-duty diamond tread aluminum plate. Protects and accents door. Sold in pairs. SSV-5B460-AC-DP. . . \$87.95

6. NEW! ONE Industries Graphic Kit

Allows riders to easily personalize their Rhino. Made of a durable 15 mil vinyl material with 3M® adhesive that provides additional protection to the body panels. Kit includes hood and rear fender decals. Yamaha Licensed Product.

- Blue SSV-0SS56-50-55 . . . \$199.95
- Green SSV-0SS56-50-53 . . . \$199.95
- Black SSV-0SS56-50-54 . . . \$149.95



PARTS AND ACCESSORIES



1



2a



2b



3



4



5



6



7

1. Soft Sun Top

600 Denier polyester, solution-dyed. PVC-coated for extreme water resistance. Pivot-adjust steel brackets to maintain tight fit to prevent sagging. Easy installation with all necessary instructions and hardware.

Fits '08-Current Rhino 700 FI, '04-'07 Rhino 660, '06-'07 Rhino 660 SE, '06-'09 Rhino 450

Green (shown)

RHN-5UG96-00-GN . . . \$109.95

Black

RHN-5UG96-00-BK . . . \$109.95

Blue

RHN-5UG96-00-BU . . . \$109.95

2. Sport Sun Top Kit

Sun Top featuring heavy-duty plastic construction with sporty profile. Includes all hardware for easy installation. Comes standard on select models, see dealer for details.

Fits '08-Current Rhino 700 FI, '04-'07 Rhino 660, '06-'09 Rhino 450 '07 Rhino 450 SE,

a. 5UG-K8314-00-KT . . . \$435.64

Not compatible with Canopy or Canopy Frame (sold separately).

b. 5B4-K8314-00-KT . . . \$401.40

3. Moulded Sun Top

High-durability, roto-moulded, plastic roof. Double wall for rugged strength. Slim line profile, fits with rear speaker bar. Not compatible with Canopy or Canopy Frame (sold separately).

Fits '08-Current Rhino 700 FI, '04-'07 Rhino 660, '06-'07 Rhino 660 SE, '06-'09 Rhino 450

Black

SSV-5UG97-00-BK . . . \$299.95

4. Canopy

Heavy-duty, PVC-coated, 420D polyester. Front and rear clear window access. Easy-on, easy-off feature. Helps to keep your cargo dry. Must be used in conjunction with Canopy Frame (sold separately).

Not compatible with Moulded Sun Top or Sport Sun Top Kit (5B4-K8314-00-KT), sold separately.

SSV-5B496-00-TN . . . \$199.95

5. NEW! Speed Industries Pop-Up Tonneau Cover

This pop-up design allows for a large covered area that can be easily folded down to load/unload cargo items. The extruded aluminum frame provides strength while the durable automotive-grade black vinyl stands up to the elements.

SSV-OSS56-50-37 . . . \$299.95

6. Rhino Cover

Black nylon cover with Rhino graphics, rubberized for a watertight fit. For storage use only, not recommended for trailering.

RHN-5UGCV-NY-BK . . . \$169.95

7. Front End Hood Cover

Dress up the front of your Rhino with this easy-to-install front end cover. Made of a tough vinyl material with soft under layer to reduce scuffing. Screen-printed Rhino logo on front.

SSV-5UG10-20-01 . . . \$82.95

1. NEW! Yamaha Plow Kit

Exclusive Yamaha design. Lightweight made with impact resistant plastic and a powder-coated steel frame. 66" wide design with an aggressive angle for more effective clearing. Innovative, industry-first "DualTrip" design allows the blade to yield its angle when striking objects. Includes mount, arm and base assembly, blade and lifting motor. Cannot be combined with Front Bumper (SSV-5UG14-00-BK).

SSV-5UG84-00-00 . . \$1,720.80

2. Yamaha Plow Kit

Exclusive Yamaha Rhino plow system, featuring a tough durable 72" straight blade. Front mount base assembly with foot pedal angle adjust lever for easy blade angling. Front mount, "quick attach" easy-on, easy-off design is compatible with all factory stock bumpers and accessory Yamaha bumpers. Low-profile mounting bracket ensures that vehicle clearance is not compromised. Durable long-lasting powder-coated finish. Kit includes 72" blade, plow base and mounting bracket. Not compatible with WARN Multi-Mount Kit.

SSV-5B437-00-KT . . \$1,052.74

3. NEW! WARN® XT40 Winch

With 50' of lightweight, easy-to-handle synthetic rope; a versatile Wireless Control System with a 50' range; and 4,000-lb. of pulling power, you won't find a more extreme Rhino winch anywhere. The XT40 showcases a sealed drive train to keep the elements out; a 3-stage planetary geartrain for smooth, reliable operation; and our patented disc brake to hold your Rhino on the steep stuff. Top it off with an efficient motor for less battery drain and an easy-to-use clutch control dial; you'll be ready for any trail. Requires Winch Mount (sold separately).

SSV-5B469-XT-40 . . \$1,094.95

4. WARN RT40 Winch

The RT40 has a massive 4,000-lb. line capacity and the longest wire rope in the WARN Powersports winch line-up so you can pull heavier loads farther. This winch has tons of standard features including a patent-pending disc brake that holds strong on inclines, a fully sealed geartrain to guard against the elements, a reliable and smooth-running, all-metal, 3-stage planetary geartrain, a corded remote and a mini-rocker control, and an efficient electrical system for long pulls and less battery drain. Requires Winch Mount (sold separately).

SSV-5B469-40-00 . . \$824.95

5. WARN RT30 Winch

Powerful 3000-lb. load limit. WARN engineering and quality. Requires Winch Mount (sold separately).

RHN-5UG69-30-RT . . \$649.95

WARN Front Winch Mount

(not shown)
SSV-5B482-30-00 . . . \$98.95

6. WARN Multi-Mount Kit

Gives you the option to mount your winch on either the front or rear of your Rhino. Includes a 3000-lb. Winch, Rear Receiver and all required hardware. Front Mount sold separately. Not Compatible with Bush Bar Bumper, Front Bumper or Plow Kit (all sold separately).
SSV-5B483-20-00 . . . \$963.95



PARTS AND ACCESSORIES



1. Piggyback HPG Shock Set

Upgrade your suspension for the ultimate in control and comfort. Features preload adjustable Piggyback Shocks. Note: These Shocks come stock on the Rhino 660 Sport Edition.

Fits '08~Current Rhino 700 FI/SE,
'04~'07 Rhino 660,
'06~'07 Rhino 660 SE,
'06~'09 Rhino 450,
'08 Rhino 450 SE

Front

5UG-23350-60-KT . . \$1,220.78

Rear

5UG-22210-60-KT . . \$1,311.44

2. Shock Adjuster

Designed to easily access the shocks without having to remove the wheels. Heat treated and coated for excellent durability. Solid one-piece construction.

ATV-SHK19-73-02 . . . \$92.95

These accessories fit all Rhino 700 FI/660/450 models unless otherwise noted.

Yamaha Motor Canada proudly offers and acknowledges quality products manufactured by reputable companies throughout this brochure. Kolpin is a registered trademark of Kolpin Outdoors, Inc., Techmount is a trademark of High Gear Specialties, Inc. iPod and Apple are registered trademarks of Apple Inc. PIAA is a registered trademark of PIAA Corporation. XM is a registered trademark of XM Satellite Radio, Inc. 3M is a registered trademark of 3M Company. Realtree Hardwoods is a registered trademark of Jordan Outdoor Enterprises, Ltd. WARN is a registered trademark of Warn Industries, Inc. All other company and/or product names are trademarks or registered trademarks of their respective holders.

YAMAHA is a registered trademark of Yamaha Motor Co. Ltd. and Yamaha Corporation. Yamalube is a registered trademark of Yamaha Corporation. Rimmings is a registered trademark of Yamaha Motor Canada Ltd.

YAMALUBE®

PERFORMANCE IN A BOTTLE™

Yamalube. The best of the best. Yamalube was engineered to provide the finest quality performance lubricants for Yamaha engines, by the very same team that engineered and created the technology. After all, no one knows your Yamaha quite like Yamaha.



FULL SYNTHETIC - FOUR STROKE

SAE 15W-50 *

Blended from fully synthetic base oils and fortified with synthetic esters to provide the absolute highest performance and protection you can buy for your Yamaha. Recommended for motorcycles, ATVs and side-by-side vehicles.



PERFORMANCE - FOUR STROKE

SAE 5W-30

Blended specifically for utility ATVs with additives and base oils designed to give year-round performance, from cool to warm climates. Designed with hardworking detergents to keep the engine cleaner longer.



SEMI-SYNTHETIC - FOUR STROKE

SAE 5W-40

Contains a special blend of synthetic and mineral base stocks to lubricate and protect utility ATVs and side-by-side vehicles even under the added stress of low speed hauling and climbing.



PERFORMANCE - FOUR STROKE

SAE 10W-40 *

Blended with premium quality mineral base stocks for use in motorcycles, ATVs, Side by Sides and scooters. It provides stable clutch performance and film strength protecting your engine from the wear and tear of daily use.



SAE 20W-50 *

Provides stable clutch performance and film strength protecting your engine from wear and tear of daily use.



SEMI-SYNTHETIC - FOUR STROKE

SAE 10W-50 *

Specially blended mineral and synthetic base stocks recommended for sport applications. Multi-grading provides the benefits of a light oil and the protection of a heavier viscosity.



SEMI-SYNTHETIC - FOUR STROKE

SAE 0W-30

Designed with synthetic and mineral base stocks to provide the best cold weather performance possible for Yamaha snowmobiles and ATVs. Performance rated to -40° C.

* JASO certified. Performance guaranteed by Yamaha Motor Corporation. Meets API SL requirements. Visit your local Yamaha dealer for more information and specifications.