

**1. GYTR® Race Exhaust System**

Developed through hours of dyno and track testing to produce the best exhaust system for your bike. This hard-anodized oval aluminum muffler shell and cone-style end cap, is completely rebuildable. Uses stock heat shield. This GYTR Race Exhaust System is 98 dbA compliant. This accessory is restricted to closed-course competition only. Their use may violate emission/tampering regulations and sound emission laws. Their use may also invalidate the unit warranty.

Fits '07-'11 YZ250F

**17D-E46D0-V0-00 \$889.95**

Fits '10-'11 YZ450F

**33D-E46D0-V0-00 \$1,099.95**

**2. GYTR Slip-On Muffler**

For use with the GYTR Race Exhaust System.

Aluminum

Fits '07-'11 YZ250F

**17D-E47A0-V0-00 \$599.95**

Fits '10-'11 YZ450F

**33D-E47A0-V0-00 \$695.95**

**3. GYTR Header Pipe**

Add this header pipe to complement your GYTR muffler for maximum performance from your exhaust system. Includes mounts (not shown) for stock heat shield.

Stainless Steel

Fits '07-'11 YZ250F

**17D-E46A0-V0-00 \$245.95**

Fits '10-'11 YZ450F

**33D-E46A0-V0-00 \$475.95**

**4. GYTR Performance Camshafts**

Designed to maximize horsepower and torque in the mid-range and top-end without sacrificing any low-end power. Manufactured to exact specifications using special cam-grinding CNC machines. Special 100% billet alloy construction provides consistent machined surfaces for increased durability. Cams feature stock cam gears, auto de-comp for unmatched durability. Ready to go, no hassling with costly core charges, deposits, or exchange programs. This accessory is restricted to closed-course competition only. Their use may violate emission/tampering regulations and sound emission laws. Their use may also invalidate the unit warranty.

Includes GYTR springs

Fits '05-'11 YZ250F, '05-'10 WR250F

**17D-E21F0-V0-00 \$949.95**

Fits '10-'11 YZ450F

**33D-E21F0-V0-00 \$629.95**

**5. GYTR Valve Spring Kit**

Heat-treated, progressive dual-rate spring design is made of fatigue-resistant chrome silicon designed to maximize the performance and not sacrifice the durability of the valve train. Intake spring force increased by 56% over stock at maximum lift of 8.8 mm, exhaust spring force increased by 25% over stock at maximum lift of 8.5mm.

Technical specifications: Intake Springs:- Installed height: 29.4mm, Spring force: 120 N (27 lb), Spring height at max lift of 8.8 mm: 20.6 mm, Spring force: 325 N (73 lb). Exhaust Springs: Installed spring height: 28.65 mm, Spring force: 131 N (29.5 lb), Spring height at max lift of 8.5mm: 20.15mm, Spring force: 341 N (77 lb). Requires spring retainers, sold separately.

Fits '05-'11 YZ250F, '05-'10 WR250F

**17D-E21J0-V0-00 \$169.95**

**6. G2 Ergonomics Quick-Turn Throttle Tube**

Features a larger-diameter throttle cam that requires less throttle turn to reach full throttle. Less throttle turn also means less "elbow drop", which keeps the rider in the optimum riding position. Self-lubricating Delrin® bushings in each end of the throttle tubes eliminate aluminum-to-aluminum contact and provide a smooth "ball bearing" feel. Fits in your stock throttle housing, no need to cut, trim, or file. Knurled throttle tube helps prevent grip slippage. CNC-machined for a precision fit.

Fits '03-'09 YZ450F, '01-'09 YZ250F

**GYT-OSS56-31-83 \$89.95**

**7. GYTR High Compression Piston Kits**

Increase engine compression ratio. Piston is forged aluminum with machined valve pockets for additional valve clearance when higher lift camshafts are used. 2-ring design has less drag than 3-ring design resulting in additional horsepower. Includes piston rings, piston pin, and clips (uses stock replacement). Uses stock gaskets (not included). Requires use of a minimum 100-octane racing fuel. Increase engine compression ratio to 13.5:1

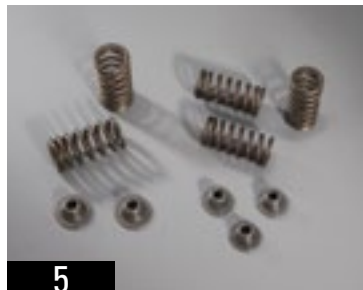
Fits '10-'11 YZ450F

**33D-E16A0-V0-00 \$245.95**

Increase engine compression ratio to 14.0:1

Fits '05-'11 YZ250F, '05-'10 WR250F

**17D-E16A0-V0-00 \$259.95**



### 1. GYTR High Flow Air Filter

Offers increased air flow and excellent filtration for performance applications. Washable and reusable.

Fits '10~'11 YZ450F

**33D-E41C0-V0-00 \$26.95**

### 2. Talon Rear Shock Pre-Load Adjuster

This practical accessory makes changing the pre-load on the rear shock easier, quicker and more precise. A must-have for all off-roaders.

A threaded and lockable top ring is used to set the basic preload and the bottom ring is used to set plus and minus from this setting. One notch is equivalent to one complete turn of a normal standard shock lower ring. Manufactured from the highest-quality aircraft specification billet aluminum with a hard anodized finish.

Fits '03~'11 YZ450F, '03~'11 WR450F, '01~'11 YZ250F, '01~'11 WR250F, '98~'11 YZ250, '98~'11 YZ125

**GYT-OSS56-31-44 \$220.95**

### 3. GYTR Billet Clutch Components

Precision machined from aerospace-quality aluminum alloys with a unique hard coating. This provides superior performance and clutch feel, as well as excellent component durability.

The patent-pending "auto oiling system" forces oil through specially cut holes in the pressure plate, into the inner hub, and then to the clutch plates. This results in improved clutch performance, with lower clutch temperatures, less clutch expansion, and extended clutch life.

Clutch Basket

Fits '09~'11 YZ250F

**17D-E63A0-V0-00 \$296.95**

Clutch Cover

Fits '10~'11 YZ450F

**33D-E54E0-V0-00 \$149.95**

### 4. Athena® Big Bore Cylinder Kit

Kit includes a nickel-carbide plated cylinder with enlarged water passages, precision-made piston with rings, pins, clips, gaskets, o-rings, and all other parts needed for a complete installation. Note: all warranty is void if this kit is installed.

Fits '01~'07 YZ250F, '01~'10 WR250F

290cc **GYT-OSS56-31-08 \$956.95**

Fits '05~'11 YZ125

144cc **GYT-OSS56-30-99 \$999.95**

Fits '08~'09 YZ250F

290cc **GYT-OSS56-31-13 \$999.95**

Fits '08~'11 WR250R, '08~'11 WR250X

290cc **GYT-OSS56-31-18 \$1,156.95**

### 5. Enduro Skid Plates

a. These aluminum plates are designed with side skirts to help protect engine cases, water pump, and external oil lines even on the gnarliest enduro course. Constructed of 3.18mm formed aluminum that is thinner and lighter than traditional 4.06mm full plates.

Features include rubber-mounted pads that help reduce vibration and noise; drain holes for mud and water and no loose mounting spacers.

Fits '10~'11 YZ250F

Aluminum

**17D-F14B0-T0-00 \$155.95**

Fits '10~'11 YZ450F

Aluminum

**33D-F14B0-T0-00 \$129.95**

b. Extremely tough and durable aluminum skid plate helps protect the crankcase from serious damage.

Fits '08~'11 WR250R, '08~'11 WR250X

Aluminum

**32D-W0746-10-00 \$80.95**

### 6. GYTR Glide Plate

Made from 3.12mm aluminum construction that provides the best balance between strength and light weight. Provides coverage to the engine cases and frame rails.

Features: rubber mounting pads that help reduce vibration and noise; machined front mounting bracket; drain holes that help shed mud and water.

Fits '10~'11 YZ450F

Aluminum

**33D-F14B0-P0-00 \$109.95**

### 7. GYTR Radiator Guard

Offers unmatched protection for your bike's radiators. Enhanced longevity is possible because the radiators aren't solid mounted to the frame, unlike other products that can transfer vibration to the radiators.

Fits '10~'11 YZ250F

**17D-E24C0-V0-00 \$124.95**

Fits '10~'11 YZ450F

**33D-E24C0-V0-00 \$85.95**

### 8. GYTR Water Pump Guard

This aluminum guard replaces the stock plastic guard for added protection and peace of mind.

Fits '10~'11 YZ450F

**33D-F14C0-V0-00 \$59.95**



1



2



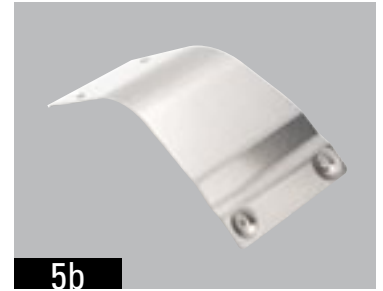
3



4



5a



5b



6



7



8

**1. GYTR Clutch Perch Assembly with Hot Start**

This billet clutch perch offers superior clutch "feel" and action. It features both a hot start lever for easier clutch and hot start engagement while starting in gear and an easy "on-the-go" clutch adjuster.

Fits '03~'08 YZ450F, '03~'08 YZ250F  
**5XC-H39C0-V0-00 \$215.95**  
 Fits '09 YZ450F, '09~'11 YZ250F  
**17D-H39C0-V0-00 \$215.95**

**2. GYTR Pivoting Clutch Lever**

This lever is designed with a folding pivot blade that will fold in the event of a tip-over. Lever to grip distance is adjustable allowing rider to adjust to their preference.

Fits '09~'11 YZ450F, '09~'11 YZ250F  
**17D-H39B0-V0-00 \$89.95**

**3. GYTR Ported Cylinder Head Assembly**

Through extensive development, with flow bench, dyno, and track testing, Yamaha achieved optimum power from our GYTR ported cylinder head. Once we perfected the head flow characteristics, Yamaha meticulously digitized the ports to obtain the precise dimensions needed for CNC machining. Unlike flow variations inherent in hand porting, CNC porting lets us accurately reproduce this maximized flow design with every cylinder head manufactured. Cylinder head comes as a ready-to-install assembly, with valve train and GYTR Performance Camshafts pre-assembled. Can be used with stock or GYTR High Compression Piston Kit, sold separately. This accessory is restricted to closed-course competition only. Their use may violate emission/tampering regulations and sound emission laws. Their use may also invalidate the unit warranty.

Fits '10~'11 YZ250F  
**17D-E11B0-V0-00 \$2,299.95**  
 Fits '10~'11 YZ450F  
**33D-E11B0-V0-00 \$2,050.95**

**4. StompGrip Traction Pads**

Features aggressive volcano profile bumps that aid the riders feel in the leg and knee area. Ultra-clear elastomer material allows application over graphics or directly to the stock airbox and side panel. 3M® adhesive prevents the edges from peeling up over time. Easy, peel-and-stick application.

Fits '06~'09 YZ450F, '06~'09 YZ250F  
**GYT-OSS56-30-69 \$53.95**

**5. GYTR Rear Brake Master Cylinder Guard**

Helps to protect the rear brake master cylinder from possible damage and provides a surface for rider "feel".

Fits '06~'09 YZ450F, '07~'11 WR450F, '06~'11 YZ250F, '07~'11 WR250F  
**17D-F58C0-V0-00 \$39.95**  
 Fits '10~'11 YZ450F  
**33D-F58C0-V0-00 \$24.95**

**6. Talon Flagship Wheels**

Ultra-lite hubs are CNC precision machined. Excel A60 2.15" rim is structurally 15% stronger than current Excel Takasago rim yet adds no weight. Features a V-curve profile that reduces mud and dirt build-up. Billet aluminum, spline-drive nipples with Bulldog stainless steel spokes. Wheels come complete with rotor bolts, billet spacers, and spline-drive nipple wrench. *Note: Rear Wheel requires Talon Rear Wheel Conversion Kit, sold separately.*

Fits '03~'11 YZ450F, '01~'11 YZ250F, '98~'11 YZ250, '98~'11 YZ125, '98~'02 YZ426F, '98~'02 YZ400F  
 Blue/Black, 2.15" x 21"  
**GYT-OSS56-30-39 \$920.95**  
 Fits '09~'11 YZ450F, '09~'11 YZ250F  
 Blue/Black, 2.15" x 19"  
**GYT-OSS56-30-41 \$1,069.95**

**7. Talon Standard Wheels**

Hubs are precision CNC machined from billet aluminum. Excel Notako rims (2.15" rear) and Bulldog stainless steel spokes. Wheels come complete with rotor bolts and billet spacers. *Note: Rear Wheel requires Talon Rear Wheel Conversion Kit, sold separately.*

Fits '03~'11 YZ450F, '01~'11 YZ250F, '98~'11 YZ250, '98~'11 YZ125, '98~'02 YZ426F, '98~'02 YZ400F  
 Black/Black, 2.15" x 21"  
**GYT-OSS56-31-35 \$685.95**

Fits '09~'11 YZ450F, '09~'11 YZ250F  
 Black/Black, 2.15" x 19"  
**GYT-OSS56-31-41 \$799.95**

**Talon Rear Wheel Conversion Kit (not shown)**

Fits '09~'11 YZ450F, '09~'11 YZ250F  
 25 mm  
**GYT-OSS56-31-42 \$85.95**



### 1. GYTR Front Sprocket

Manufactured from heat-treated chromoly steel, CNC-machined to extremely high tolerances, and has a zinc finish to avoid corrosion. Features self-cleaning grooves to shed off mud and grit, as well as reduce weight while maintaining strength.

Fits '01~'11 YZ250F, '01~'11 WR250F, '05~'11 YZ125, '08~'11 WR250X, '08~'11 WR250R

12T

**GYT-75503-12-00 \$32.95**

### 2. GYTR 520 Series Rear Sprocket

Made from 7075-T6 billet and black anodized aluminum (1/3 the weight of steel). CNC-machined for maximum fit accuracy and long-lasting durability. Note: Sprocket sizes other than stock are for closed-course competition only. Changing the final drive ratio affects exhaust emissions and also affects speedometer readings.

Fits '08~'11 WR250R, '08~'11 WR250X 40T

**GYT-OSS55-50-68 \$77.95**

42T

**GYT-OSS55-50-69 \$77.95**

43T

**GYT-OSS55-50-70 \$77.95**

45T

**GYT-OSS55-50-71 \$77.95**

### 3. GYTR Billet Offset Axle Blocks

These billet aluminum, hard-anodized axle blocks are reversible and keep the adjustment bolts from extending too far back when running the rear wheel toward the back of the swing arm for maximum wheelbase.

Fits '10~'11 YZ450F

Black

**33D-F53M0-T0-00 \$49.95**

Blue

**33D-F53M0-V0-00 \$49.95**

### 4. GYTR Tall Handlebar Mounts

These mounts are reversible and designed to offset your stock bar position an additional 5mm forward. They can be height adjusted to the stock height or 5mm taller.

Fits '10~'11 YZ250F

**17D-F34D0-V0-00 \$99.95**

Fits '10~'11 YZ450F

**33D-F34D0-V0-00 \$129.95**

### 5. Oversized Handlebar Mounts

Top-quality handlebar mounts designed to accommodate the application of 1-1/8" oversized handlebars.

Fits '08~'11 WR250R, '08~'11 WR250X

**GYT-32C60-72-00 \$65.95**

### 6. GYTR Timing Plug

This anodized 6061 billet aluminum plug replaces the stock plastic plug.

Fits '10~'11 YZ450F

36 mm

Black

**33D-E51A0-T0-00 \$39.95**

Blue

**33D-E51A0-V0-00 \$39.95**

### 7. GYTR Off-Road Flywheel

This complete flywheel assembly features an increase in inertia mass that smooths the power delivery. Helps get power to the ground and keep your momentum up through corners and tricky sections, resulting in faster lap times and more race wins. Easy to install, allowing you the opportunity to change flywheels for different types of riding.

Fits '10~'11 YZ450F

Adds 4.44 oz.

(inertia mass of 9.5 kg-cm<sup>3</sup>)

**33D-H13A0-V0-00 \$259.95**

### 8. GYTR Full Gripper Seat Cover

This design allows easier front to rear movement for cornering but with a grippy texture on the sides to help you grab the bike with your knees.

Fits '10~'11 YZ250F

Black

**17D-F47B0-T0-00 \$49.95**

Black/Blue

**17D-F47B0-V0-00 \$49.95**

Fits '10~'11 YZ450F

Black

**33D-F47B0-T0-00 \$49.95**

Black/Blue

**33D-F47B0-V0-00 \$49.95**

### 9. Factory Effex Seat Foam Bump

Slightly increases height of seat without having to replace stock foam with tall foam. Helps rider maintain desired position on seat.

Fits '03~'11 YZ450F, '01~'11 YZ250F,

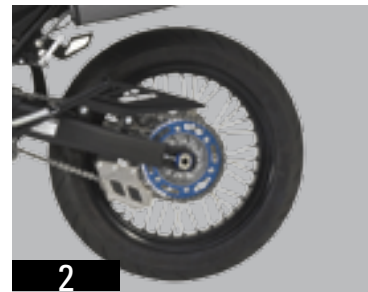
'90~'11 YZ250, '90~'11 YZ125,

'02~'11 YZ85

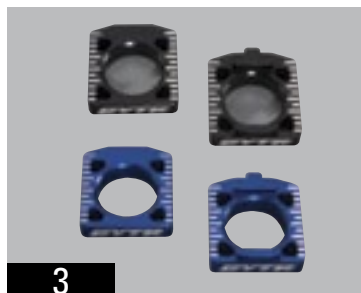
**GYT-OSS56-31-50 \$39.95**



1



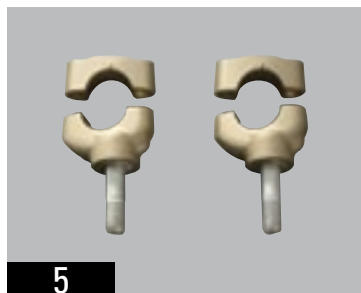
2



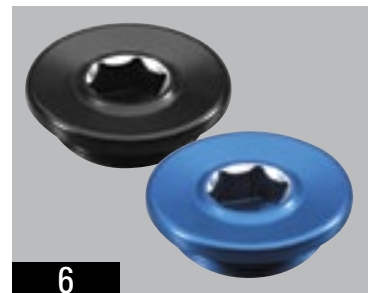
3



4



5



6



7



8



9



**1. Braided Front Brake Line**

Top-quality brake lines designed not to fatigue even under extreme conditions. Constructed using 308 stainless steel braided brake hose with a Teflon® inner liner.

Fits '10~'11 YZ450F, '10~'11 YZ250F  
Stainless Steel

**17D-F58E0-V0-00 \$75.95**

**2. Genuine Yamaha Plastic Kit**

Yamaha has made it easy to put a fresh set of fenders, shrouds, and side covers on your YZ and because they're genuine Yamaha, they fit right the first time.

Fenders/side number plate covers are white and the rad / shroud is black.  
Fits '10 YZ250F (shown)

**17D-W003A-10-00 \$210.95**

Fits '10 YZ450F

**33D-W003A-10-00 \$239.95**

Fenders are blue, side number plate covers are white and the rad / shroud is black.

Fits '10 YZ250F

**17D-W003A-00-00 \$210.95**

Fits '10 YZ450F

**33D-W003A-00-00 \$239.95**

**3. ONE Industries Hurricane Graphic/Plastics Kit**

Allows riders to easily personalize their motorcycle. Graphics are made of a durable 15-mil vinyl material with 3M® adhesive that provides additional protection to the body panels. Kit includes graphics for the radiator shrouds, front and rear fenders, swingarm, number plate/airbox and fork guard. Also includes a seat cover, front and rear fenders and radiator shroud plastics. Yamaha Licensed Product.

Yellow/Black

Fits '06~'09 YZ250F

**KIT-YA262-YL-00 \$379.95**

Fits '06~'09 YZ450F

**KIT-YA462-YL-00 \$379.95**

Fits '07~'11 YZ125

**KIT-YA122-YL-00 \$379.95**

Fits '07~'11 YZ250

**KIT-YA132-YL-00 \$379.95**

**4. ONE Industries Fork Guard Graphics**

Allows riders to easily personalize their motorcycle. Made of a durable 15-mil vinyl material with 3M adhesive that provides additional protection to the fork guards from roost and debris. Yamaha Licensed Product.

Blue/White

Fits '02~'11 YZ85

**GYT-OSS56-31-63 \$26.95**

Fits '05~'07 YZ450F, '05~'07 YZ250F, '05~'07 YZ125

**GYT-OSS56-31-61 \$26.95**

Fits '08~'09 YZ450F, '08~'09 YZ250F, '08~'11 YZ250, '08~'11 YZ125

**GYT-OSS56-31-62 \$26.95**

**5. ONE Industries GYTR Graphic Kit**

Exclusive GYTR design. Features durable 15mm vinyl material with 3M adhesive. Allows riders to easily personalize their bike. Provides protection to the tank and shroud area. Graphic Kit includes tank shroud, number plate, fenders, and swingarm decals.

Blue

Fits '10~'11 YZ250F

**GYT-OSS56-32-11 \$129.95**

Fits '10~'11 YZ450F

**GYT-OSS56-32-12 \$129.95**

**6. Factory FX Factory Racing Graphic Kit**

Includes shroud and trim graphics (fits stock plastic only), Team TC4 seat cover and bump. Number Plate Backgrounds, sold separately. Yamaha Licensed Product.

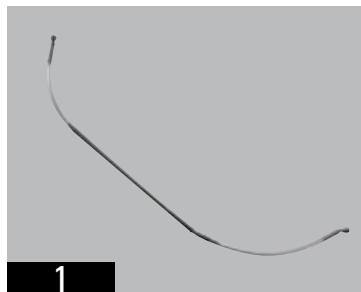
Fits '06~'09 YZ450F, '06~'09 YZ250F

a. Blue/White

**GYT-OSS56-31-46 \$249.95**

b. L&M, Blue/White

**GYT-OSS56-31-47 \$249.95**



1



2



3



4



5



6a



6b



## >> DUAL PURPOSE ACCESSORIES

### 1. Crankcase Guard Cover

Helps to keep the crankcase from being scuffed and scratched. Installs with strong two-sided tape. Sold as a pair, left and right side.

Fits '08-'11 XT250

90798-1Y153-00 \$69.95



### 2. Saddlebag Support Bars

Protects saddlebags from the heat of the muffler and drag-in by the tire.

Requires Rear Rack, sold separately.

Fits '08-'11 XT250

90798-1Y151-00 \$164.95

### 3. Sump Guard

Protects crankcase and down tube from flying stones and debris when off-roading. (Must be removed to perform oil change).

Fits '08-'11 XT250

90798-1Y019-00 \$282.95



## >> CONVENIENCE + MULTI-PURPOSE

### 1. Matrix Concepts M2 WORX Stands

Features replaceable PVC rubber traction top with easy-to-use steel fasteners and rectangular access slot for easy oil draining. Designed to transport upside down to hold a Matrix utility can inside (not included). Comes complete with removable lower plastic work tray with easy-to-grip handles. TPR rubber mat in the tray can be removed to use tray as an oil drain pan (easy to clean) or to hold parts and tools, keeping them out of the dirt. 100% "I Beam" ABS glass-filled plastic construction. It's lightweight (6 lb), strong and rated at 500 lb +. Exclusive two-year limited warranty against bending or breaking.

Blue GYT-OSS56-32-15 \$109.95

Black GYT-OSS56-32-16 \$109.95

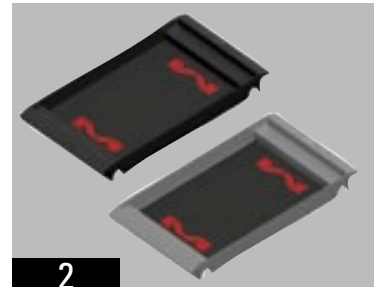
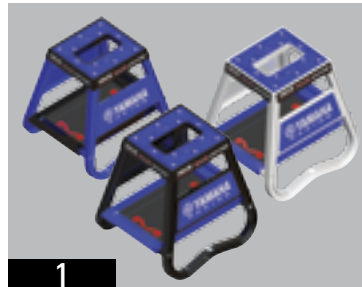
White GYT-OSS56-32-17 \$109.95

### 2. Matrix Concepts M2 WORX Stand Trays

Works with the M2 WORX Stand (sold separately) or can be used by itself on the floor or on the work bench to hold parts and tools. Also works great as an oil tub/ bath for soaking clutch plates. Side handles make it easy to put in place and remove from the M2 WORX Stand. 100% ABS plastic construction makes it lightweight and very strong. Can be easily cleaned with household cleaning products. Exclusive two-year limited warranty against breaking.

Black GYT-OSS56-32-18 \$17.95

Silver GYT-OSS56-32-19 \$17.95



**1. Matrix Concepts M4 Mats**

Tough, colour-fast, non-fade PVC work mats are gas, oil, and contact cleaner-resistant. Perfect for a work bench top or a truck tailgate and provides a non-slip work surface. Roll it up for easy transport in the included netted drawstring bag.

- Bench Mat, 18" x 20" **GYT-OSS56-32-31** **\$27.95**
- Floor Mat, 24" x 48" **GYT-OSS56-32-32** **\$44.95**

**2. Matrix Concepts M5 Stand Mats**

Tough, colour-fast, non-fade PVC work mat is gas, oil, and contact cleaner-resistant. Use it in the garage, shop, back of the truck or at the track. Works well with the M2 WORX Stand (sold separately) or any similar YZ stand. Roll it up for easy transport in the included netted drawstring bag.

- 2' x 2' Black **GYT-OSS56-32-28** **\$39.95**
- Red **GYT-OSS56-32-29** **\$39.95**
- Blue **GYT-OSS56-32-30** **\$39.95**

**3. Matrix Concepts M7 Trux Mat**

Tough, colour-fast, non-fade PVC work mat is gas, oil, and contact cleaner-resistant. Mat keeps parts clean and out of the dirt, or if a part is dropped, it lands on a soft surface. Use it in the garage, shop, back of the truck or at the track. Roll it up for easy transport in the included netted drawstring bag.

- 2' x 6' Black **GYT-OSS56-32-41** **\$89.95**
- Blue **GYT-OSS56-32-42** **\$89.95**
- Red **GYT-OSS56-32-43** **\$89.95**

**4. Matrix Concepts M9 WORX Mat**

Tough, colour-fast, non-fade PVC work mat is gas, oil, and contact cleaner-resistant. Mat keeps parts clean and out of the dirt or if a part is dropped, it lands on a soft surface. Roll it up for easy transport in the included netted drawstring bag.

- 3' x 6' Black **GYT-OSS56-32-25** **\$99.95**
- Red **GYT-OSS56-32-26** **\$99.95**
- Blue **GYT-OSS56-32-27** **\$99.95**

**5. Matrix Concepts Loading Ramps**

ABS, glass-filled, injection-moulded plastic outer construction, strengthened with 6061-T6 aluminum-reinforced inner rails that rate the ramp at over 500 lb. Design includes an exclusive "centre traction ribbed beam design" for easy non-slip loading. Ramp is extremely lightweight, (Standard-9 lb/Folding-11 lb). Hinged, replaceable lower plastic feet work at any angle. Replaceable soft rubber bottom tongue plate eliminates

excess sliding when loading. Exclusive two-year limited warranty against bending or breaking. Folding models fold in half for easy transportation/storage and features self-lubricating, folding hinges (lifetime replacement warranty against bending or breaking), and a centre handle for easy handling.

- a. M6 Standard, 6' Silver **GYT-OSS56-32-24** **\$109.95**
- Blue **GYT-OSS56-32-46** **\$109.95**

b. M6 Folding, 6'

- Black **GYT-OSS56-32-20** **\$139.95**
- White **GYT-OSS56-32-21** **\$139.95**
- M8 Folding, 8' Black **GYT-OSS56-32-22** **\$159.95**
- White **GYT-OSS56-32-23** **\$159.95**

**6. Matrix Concepts M1 Tie Downs**

Premium tie down set with top soft loop hook, bottom swivel carabineer and Yamaha graphics. Made from abrasion-resistant nylon webbing. All stitching is double-stitched square/cross with heavy-duty nylon thread. Top soft loop extension with rubber coated "S" hook incorporated into design to protect the handlebars. Custom spring loaded lock-on swivel carabineer bottom hook for secure connection. Heavy-duty steel cam-lock with tough steel spring for a secure lock. Assembly strength is 1,400 lb and a 500-lb load limit. Sold in pairs.

- a. Phatty Tie Downs, 69" x 1.5" Black **GYT-OSS56-32-34** **\$42.95**
- Blue **GYT-OSS56-32-33** **\$42.95**
- Red **GYT-OSS56-32-35** **\$42.95**

b. WORX Tie Downs, 69" x 1"

- Black **GYT-OSS56-32-37** **\$32.95**
- Blue **GYT-OSS56-32-36** **\$32.95**
- Red **GYT-OSS56-32-38** **\$32.95**

**7. Matrix Concepts M1 Utility Strap**

Made from abrasion-resistant nylon webbing. All stitching is double-stitched square/cross with heavy-duty nylon thread. Heavy-duty steel cam-lock with tough steel spring for a secure lock. Yamaha and Matrix graphics. Sold in pairs.

- 40" x 1" **GYT-OSS56-32-39** **\$10.95**

**Wheel Strap** (not shown)

- Sold in pairs.
- 30" x 1" **GYT-OSS56-32-40** **\$9.95**

