



NEW!



NEW!



NEW!



NEW!



NEW!



NEW!



NEW!

1. **NEW! GYTR High Flow Air Filter**
High-flow gauze filter offers superior engine protection. Reusable. Requires GYTR Air Filter Adapter Plate, sold separately.
GYT-5TG95-01-10. \$104.95

2. **NEW! GYTR Multi-Stage Air Filter**
Special two-stage design for maximum airflow and superior filtration for greater engine protection. Service with Yamaha Air Filter Oil, sold separately. Cannot be combined with GYTR Air Filter Adapter Plate.
GYT-5TG95-00-00. \$43.95

3. **NEW! GYTR Pre-Filter**
Less maintenance in dusty conditions. Pre-filters dirt with no critical airflow or power loss. Requires GYTR High Flow Air Filter, sold separately.
GYT-5TG95-11-BL \$35.95

GYTR Clutch Components
Precision machined from aerospace-quality aluminum alloys with a unique hard coating. This provides superior performance and clutch feel, as well as excellent component durability. The patent-pending "auto oiling system" forces oil through specially cut holes in the pressure plate, into the inner hub, and then to the clutch plates. This results in improved clutch performance, with lower clutch temperatures, less clutch expansion, and extended clutch life.

4. **NEW! GYTR Billet Clutch Basket**
GYT-5XD56-10-00. \$296.95

5. **NEW! GYTR Billet Clutch Cover**
GYT-5XD35-10-AL \$182.95

6. **NEW! GYTR Billet Clutch Inner Hub**
GYT-5XD56-40-00. \$417.95

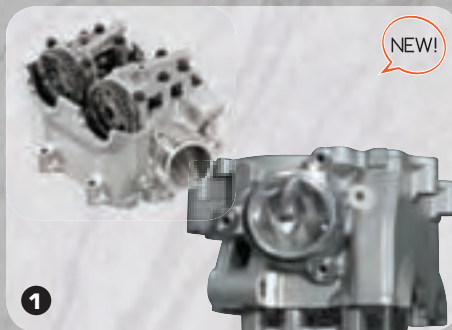
7. **NEW! GYTR Billet Clutch Pressure Plate**
GYT-2S256-20-00. \$218.95

Many of these accessories are designed exclusively for closed-course competition, these GYTR accessories require maintenance intervals every 20 hours between inspections. This broad range of accessories is designed to help privateers maximize the performance of their Yamaha to be highly competitive at every level. Modifications using these accessories or any other components will void the manufacturer warranty of new vehicles.

1. NEW! GYTR Ported Cylinder Head Assembly

Through extensive development, with flow bench, dyno, and track testing, Yamaha achieved optimum power from our GYTR ported cylinder head. Once we perfected the head flow characteristics, Yamaha meticulously digitized the ports to obtain the precise dimensions needed for CNC machining. Unlike flow variations inherent in hand porting, CNC porting lets us accurately reproduce this maximized flow design with every cylinder head manufactured. Cylinder head comes as a ready-to-install assembly, with valve train and GYTR Performance Camshafts pre-assembled. Can be used with stock or GYTR High Compression Piston Kit, sold separately.*

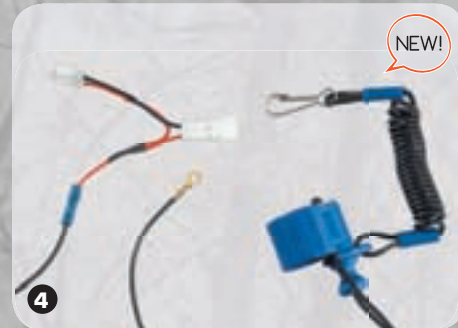
18P-E11B0-V0-00 \$2,716.95



2. NEW! GYTR Performance Camshafts

These GYTR performance cams are designed to maximize horsepower and torque in the mid-range and top-end without sacrificing any low-end power. Manufactured to exact specifications using special cam-grinding CNC machines. Special 100% billet alloy construction provides consistent machined surfaces for increased durability. Cams feature stock cam gears and auto de-comp for unmatched durability. Ready to go, no hassling with costly core charges, deposits, or exchange programs.*

18P-E21F0-V0-00 \$599.95



3. NEW! GYTR Performance ECU

Yamaha has teamed with Dynojet Research®, industry-leading manufacturer of the Power Commander®, to produce this "piggyback" style fuel management system for the YFZ450R/X. Comes pre-programmed with maps developed by Yamaha factory technicians to work with multiple GYTR performance upgrade configurations.*

18P-H59B0-V0-00 \$450.95



4. NEW! GYTR Racing Lanyard

Required for most racing applications, this GYTR lanyard features stock connectors for easy installation. This direct-connect feature means a quick, neat installation – no cutting or splicing of wires like run-of-the-mill products on the market.

18P-H25C0-V0-00 \$43.95



5. NEW! GYTR Race Exhaust System

Developed through hours of dyno and track testing, this full system is the optimum exhaust system for the YFZ450R/X. This hard-anodized oval aluminum muffler shell and cone-style end cap is completely rebuildable. Uses stock heat shield. Meets AMA®/ATVA® 99dBA requirements.*

18P-E46D0-U0-00 \$773.95

6. NEW! GYTR Slip-On Muffler

This slip-on muffler is designed to offer a boost in mid and top-end power. Hard-anodized oval aluminum muffler shell. Cone-style end cap, completely rebuildable. Uses stock heat shield and meets AMA/ ATVA 99bBA requirements.*

Aluminum
18P-E47A0-T0-00 \$548.95

*These accessories are intended for closed course competition only. Their use may violate emission tampering regulations and sound emission laws. Their use may also invalidate the unit warranty.



1. NEW! GYTR High Compression Piston Kit
 Increase engine compression ratio to 13.2:1 (stock is 11.4:1). Offers 1.5 to 3 hp increase throughout most of the power band. No crankshaft rebalancing necessary. Piston is forged aluminum with machined valve pockets for additional valve clearance when higher lift camshafts are used. Includes piston rings, piston pin, and clips (uses stock replacements). Uses stock gaskets (not included). Requires use of a minimum 100-octane racing fuel.
GYT-5D305-00-00 \$293.95

2. NEW! GYTR Air Filter Adapter Plate
 Made from 6061-T6 Billet aluminum. Allows the use of the GYTR High Flow Air Filter, sold separately.
18P-E41E0-V0-00 \$110.95

3. NEW! GYTR Front MX Style Grab Bar
 "Bull Horn" design helps protect the shocks and radiator while offering a large hand-hold to manoeuvre the machine in mud. Wrap-under design provides a smooth transition from the front grab bar to the glide plate without affecting the stock approach angles. Made of lightweight 5052 and 6063 aluminum alloy tubing and sheet metal with a strong, durable finish.
 Black
18P-F84L0-S0-00 \$182.95
 Aluminum
18P-F84L0-U0-00 \$177.95

4. NEW! GYTR Front Sport Grab Bar
 Helps provide protection to the shocks and radiator while offering a large hand-hold to manoeuvre the machine in mud. Wrap-under design provides a smooth transition from the front grab bar without affecting the stock approach angles. 1" diameter 6063 aluminum alloy tubing with a durable finish.
 Aluminum
18P-F84L0-V0-00 \$157.95
 Black
18P-F84L0-T0-00 \$160.95

5. NEW! GYTR Rear Grab Bar
 A quality aluminum rear grab bar with a durable black powder-coated finish. Includes flag mount.
18P-F85E0-V0-00 \$110.95

6. NEW! Pro Armor Pro XC Front Grab Bar
 Features 1-1/2" lightweight aluminum alloy perfect for riding the trails where extra protection is needed. TIG (tungsten inert gas) welded for precision and durability.
ATV-Y0996-69-00 \$181.95

1. NEW! GYTR Footwells

Special ball-burnished, surface-hardened aluminum is used in this tube-and-plate construction. Replaces standard footwell assembly. Requires GYTR Footwell Extensions, sold separately.

Black

18P-F16G0-U0-00 \$241.95

Aluminum

18P-F16G0-V0-00 \$241.95



NEW!

2. NEW! GYTR Nerf Bar Kits

Tough 1.25" thick, 6063 aluminum alloy tubing with 1.5" nylon webbing. Extruded joint clamp makes alignment and installation a snap. Meets all AMA and ATVA racing regulations. For closed course competition only. Dimensions: 1-1/4" x 1-1/2".

Fits YFZ450R

Silver/Black (Shown)

GYT-18P31-KT-01 \$269.90

Silver/Blue

GYT-18P31-KT-02 \$269.90

Silver/Red

GYT-18P31-KT-03 \$269.90

Black/Black (Shown)

GYT-18P31-KT-04 \$269.90

Black/Blue

GYT-18P31-KT-05 \$269.90

Black/Red

GYT-18P31-KT-06 \$269.90

Fits YFZ450X

Silver/Black

GYT-46D31-KT-01 \$269.95



NEW!

3. NEW! GYTR Nerf Bar/Footwell/ Peg Combination Kit

Combines the nerf bars, footwells, and footpegs into one accessory! 1.25" diameter 6063 aluminum alloy tubing. Footpegs are 2.5" wide and 0.75" longer than stock with two height positions (0.75" lower than stock or 1.25" lower than stock). Extruded joint clamp helps make installation and alignment a snap. 5° sweep for ultimate leverage, comfort, and clearance. Durable 1.5" black nylon webbing in nerf bar and footwell areas. Meets all AMA® and ATVA® racing regulations.

For closed-course competition only.

Dimensions: 1-1/4" x 1-1/2".

Fits YFZ450R

Silver/Black

GYT-18P31-KT-07 \$565.90

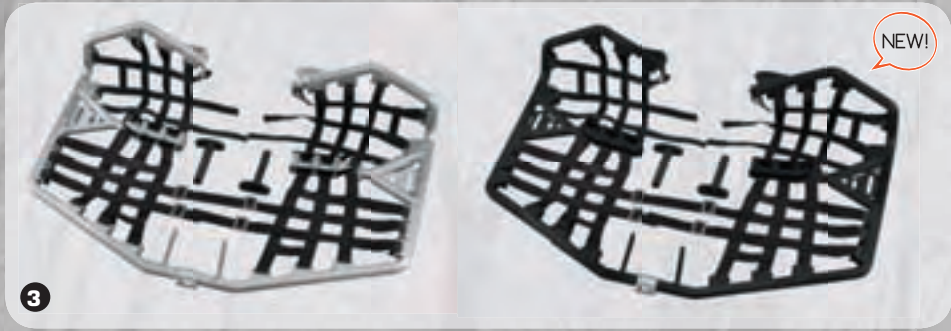
Black

GYT-18P31-KT-08 \$609.90

Fits YFZ450X

Silver/Black

GYT-46D31-KT-07 \$565.95



NEW!



NEW!



NEW!

4. NEW! Pro Armor Revolution Nerf Bar Kit

Features super-gnarly fat footpegs with 4 aggressive rows of teeth for maximum grip. Heel nets are silk screened with the Pro Armor Logo. Race-ready design.

Silver

ATV-Y0990-37-00 \$382.95

5. NEW! GYTR Footwell Extensions

Made from high-impact plastic.

Black

18P-F16H0-V0-00 \$81.95



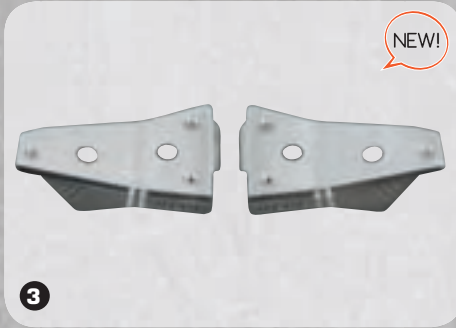
NEW!

1



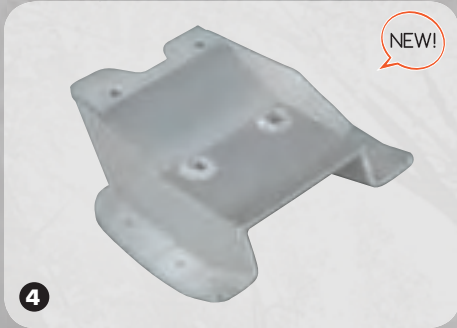
NEW!

2



NEW!

3



NEW!

4



NEW!

5



NEW!

6



1. NEW! Shock Covers

Helps deflect rocks and debris.

Front (Sold in pairs)

Blue (Shown)

18P-F33A0-V0-00 \$47.95

Black

18P-F33A0-T0-00 \$47.95

Rear (Sold individually)

Blue

18P-F22A0-V0-00 \$25.95

Black

18P-F22A0-T0-00 \$25.95

2. NEW! Pro Armor Front Shock Covers

Features a moisture-repellent, nylon fabric with prominent Pro Armor graphics. Covers entire front shocks to protect from debris and moisture. Sold in pairs.

Black

Fits YFZ450R, YFZ450X

ATV-Y0740-52-00 \$39.95

3. NEW! A-Arm Skid Plates

Helps protect A-arms, steering, and suspension components. Strong, lightweight 0.125" -thick 5052 aluminum alloy sheet metal.

Aluminum

Fits YFZ450R

18P-F31A0-V0-00 \$131.95

Fits YFZ450X

46D-F31A0-V0-00 \$131.95

4. NEW! Swingarm Skid Plate

Helps protect swingarm, braking, and driveline components. Strong, lightweight 0.25" -thick 5052 aluminum alloy sheet metal with riveted UHMW polyethylene chain guide to help prevent potential metal-to-metal contact. High-strength mounting hardware included.

18P-F21A0-V0-00 \$186.95

5. NEW! Engine/Frame Skid Plate

Helps protect the frame, steering stem sleeve, engine, and chassis components. Strong, lightweight 0.16" thick 5052 aluminum alloy sheet metal construction. Not compatible with the Frame Glide Plates, sold separately.

18P-F84N0-V0-00 \$160.95

6. NEW! Frame Glide Plates

These lightweight, 0.25" thick polyurethane construction is much lighter than standard aluminum skid plates and helps protect frame, engine, and chassis components. Plate provides a smooth, slick surface so the ATV can "glide" over track obstacles. Not compatible with the Engine/Frame Skid Plate.

White

18P-F84N0-S0-00 \$179.95

Black

18P-F84N0-U0-00 \$142.95

Many of these accessories are designed exclusively for closed-course competition, these GYTR accessories require maintenance intervals every 20 hours between inspections. This broad range of accessories is designed to help privateers maximize the performance of their Yamaha to be highly competitive at every level. Modifications using these accessories or any other components will void the manufacturer warranty of new vehicles.

SPORT YFZ450R | YFZ450X

1. NEW! GYTR Timing Plugs

These anodized 6061 billet aluminum plug replaces the stock plastic plug. For centre cover.

14mm

Red

18P-E51B0-V0-00 \$34.95

Blue

GYT-2S235-14-AL \$32.95

Black (Not Shown)

5XC-E51B0-V0-00 \$34.95



2. NEW! GYTR Timing/Engine Plugs

These anodized 6061 billet aluminum plug replaces the stock plastic plug. For dead centre cover.

36mm

Blue

18P-E51A0-V0-00 \$36.95

Red

18P-E51A0-U0-00 \$36.95

Black (Not Shown)

33D-E51A0-T0-00 \$49.95



3. NEW! GYTR Magnetic Oil

Drain Plugs

Replaces the stock steel drain plug. 60% lighter than stock. Includes a magnet that collects metal shavings to prevent them from circulating in the motor oil.

Red

18P-E51C0-U0-00 \$34.95

Blue

18P-E51C0-V0-00 \$34.95



4. NEW! GYTR Grip Donuts

Helps prevent blistering.

Blue

GYT-5XD22-00-00 \$9.95

5. NEW! GYTR Handlebar

Clamp Cover

Factory Racing logo printed on scratch-resistant 15-mil vinyl. 10" long.

Blue

GYT-5XC25-18-BL \$30.95



6. NEW! GYTR Graphic Kits

Designed to enhance the look of your ATV.

a. Inferno Graphic

Red/White

18P-F17C0-U0-00 \$80.95

b. Race-Ready Graphic

Blue

18P-F17C0-V0-00 \$80.95



Shown with Race-Ready Graphic Kit (6b)



Many of these accessories are designed exclusively for closed-course competition, these GYTR accessories require maintenance intervals every 20 hours between inspections. This broad range of accessories is designed to help privateers maximize the performance of their Yamaha to be highly competitive at every level. Modifications using these accessories or any other components will void the manufacturer warranty of new vehicles.



1



2



3



4



5



6



7



8



9

1. GYTR Oval Muffler Packing Kits
High-quality fibre packing cartridge. Comes on a cardboard sleeve for easy installation.
GYT-5TA93-33-KT \$43.95

2. GYTR Muffler Strap
Replacement strap, rubber insulator, mount spacer and mounting bolt.
Fits Oval Carbon Fibre/Aluminum GYTR Mufflers Sold individually.
GYT-5SF93-08-K0. \$50.95

3. GYTR Spark Arrestor
Designed for GYTR exhaust systems with two-piece end caps.
GYT-5XD93-23-SS \$23.95

4. GYTR Multi-Stage Air Filter
Special two-stage design for maximum airflow and superior filtration for greater engine protection. Service with Yamaha Air Filter Oil, sold separately. Cannot be combined with GYTR Air Filter Adapter Plate.
GYT-5TG95-00-00. \$43.95

5. GYTR High Flow Air Filter
High-flow gauze filter offers superior engine protection. Reusable. Requires GYTR Air Filter Adapter Plate, sold separately.
GYT-5TG95-01-10. \$104.95

6. GYTR Air Filter Adapter Plate
Made from 6061-T6 Billet aluminum. Allows the use of the GYTR High Flow Air Filter, sold separately.
GYT-5TG95-10-00. \$170.95

7. GYTR Pre-Filter
Less maintenance in dusty conditions. Pre-filters dirt with no critical airflow or power loss. Requires GYTR High Flow Air Filter, sold separately.
GYT-5TG95-11-BL \$35.95

8. GYTR Exhaust Plug
Rubber conical plug for keeping water out of the exhaust during washing. GYTR logo flag provided as a reminder to remove.
ABA-5BE87-PL-UG. \$21.95

9. GYTR Performance CDI
Increases the rev limiter from 10,750 rpm ~ 11,200 rpm, while also increasing the low-to-mid range advance curve. Uses the stock wire harness and connectors.
For closed-course competition only.
GYT-5TG97-00-00. \$384.95

GYTR Clutch Components

Precision machined from aerospace-quality aluminum alloys with a unique hard coating. This provides superior performance and clutch feel, as well as excellent component durability. The patent-pending "auto oiling system" forces oil through specially cut holes in the pressure plate, into the inner hub, and then to the clutch plates. This results in improved clutch performance, with lower clutch temperatures, less clutch expansion, and extended clutch life.

1. GYTR Billet Clutch Basket

Fits '07-Current YFZ450

GYT-1S356-10-00 \$307.95

2. GYTR Billet Clutch Pressure Plate

GYT-5TG56-20-00 \$245.95

3. GYTR Billet Clutch Cover

GYT-5XD35-10-AL \$182.95

4. GYTR Billet Clutch Inner Hub

Fits '06-Current YFZ450

GYT-5XD56-40-00 \$417.95

5. GYTR Carburetor Jet Kit

Designed to improve throttle response, drivability, and power when used in conjunction with GYTR exhaust systems and removal of airbox lid. Includes new needle (richer than stock), main jets (#155, #160, #162 and #165) and pilot jets (#40 and #45). *For closed-course competition only.*

GYT-5TG98-10-00 \$72.95

6. GYTR High Compression Piston Kit

Increases engine compression ratio from 11.2:1 to 13.0:1. Offers 1.5 to 3 hp increase throughout most of the power band. No crank rebalancing necessary. Piston is forged aluminum with machined valve pockets for additional valve clearance when higher lift camshafts are used. Includes piston rings, piston pin, and clips (uses stock replacements). GYTR Top End Gasket Kit (sold separately) required for installation. Requires use of a minimum 100-octane racing fuel. *For closed-course competition only.*

Fits '06-Current YFZ450

GYT-5D305-00-00 \$293.95

7. GYTR Top End Gasket Kit

Required for installation of a GYTR High Compression Piston Kit, sold separately.

GYT-5TG04-10-00 \$52.95

8. GYTR Starter Gear Cover

Strong yet lightweight billet aluminum construction. Ball-burnished finish with GYTR logo.

GYT-5TG35-40-AL \$54.95

9. GYTR Throttle Housing Cover

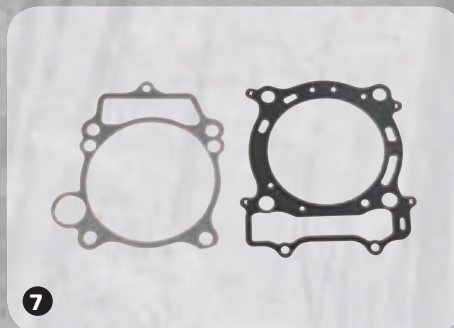
Strong yet lightweight billet aluminum construction. Ball-burnished finish with GYTR logo.

GYT-5TG27-50-AL \$32.95

10. NEW! Genuine Yamaha Clutch Kit

This kit includes all the required plates, springs, and gaskets to replace the current stock components. Refer to the service manual for installation instructions. Dealer installation is recommended.

5D3-W001G-00-00 \$190.95





4. GYTR Kick Start Kit

The kick start kit was designed as an auxiliary engine starting system. If used as the primary starting system, the electric starter system can be removed to reduce overall weight* (see note below). Includes Kick Shaft, Kick Crank, Hot Start Cable, GYTR Footwells, and GYTR Footwell Extensions. Individual Components also sold separately.

GYT-5TG07-00-00. \$896.75

Individual Components

a. GYTR Kick Shaft
Includes all internal components necessary to adapt a kick start lever.
GYT-5TG07-20-00. \$233.95

b. GYTR Kick Crank
GYT-5TG07-35-00. \$246.95

c. Hot Start Cable
GYT-5TG38-20-00. \$29.95

d. GYTR Footwells for Kick Start
The rear fender must be cut to mount to the footwells and to allow access for the kick start lever.
GYT-5TG57-30-00. \$301.95

e. GYTR Kick Start Capacitor
If the battery is removed on 2006 ~ 2007 models to reduce weight, this Capacitor Kit must be installed to avoid electrical system damage.
GYT-5TG97-50-00. \$87.95

5. GYTR Starter Block-Off Plug

Required if the starter motor is removed. Uses stock starter O-ring.
GYT-5TG07-50-00. \$52.95

6. GYTR Hot Start Levers

Requires Hot Start Cable, sold separately.
Standard (Shown)
Designed to work with the stock light switch cluster removed.
GYT-5TA38-00-AL \$98.95

Long
Designed to work with the stock light switch cluster installed.
GYT-5TG39-00-00. \$100.95

** NOTE: Removing the battery is not recommended because the ignition may misfire if the radiator fan is activated without the battery connected. If the radiator fan is not needed for your particular racing conditions, then the fan and the battery can be removed to reduce overall weight.*

Many of these accessories are designed exclusively for closed-course competition, these GYTR accessories require maintenance intervals every 20 hours between inspections. This broad range of accessories is designed to help privateers maximize the performance of their Yamaha to be highly competitive at every level. Modifications using these accessories or any other components will void the manufacturer warranty of new vehicles.

1. GYTR Nerf Bar Kit

Aluminum frame construction with 1.5" nylon webbing. Meets AMA/ ATVA regulations. *For closed-course competition only.*
GYT-5TG31-00-00. \$368.95

2. GYTR Footwells

Special ball-burnished, surface-hardened aluminum is used in this tube-and plate construction. Replaces standard footwell assembly. Requires GYTR Footwell Extensions, sold separately.
Aluminum (Shown)
GYT-5TG57-00-00. \$334.95
Black
GYT-5TG57-00-BK \$334.95

3. GYTR Footwell Extensions

Made from high-impact plastic.
Black (Shown)
GYT-5TG57-50-BK \$83.95
Red
GYT-5TG57-50-RD \$86.95

1. GYTR Front Grab Bar

Special ball-burnished, aluminum tube construction. Functional and stylish design.
GYT-5TG14-00-00 \$219.95



2. GYTR Front Grab Bar

Constructed of a 1.5" aluminum tube "bullhorn". Incorporates a front aluminum plate that is louvered for airflow and mud resistance. Features a punch-through GYTR logo.
GYT-5TG14-20-AL \$212.95

3. GYTR Front MX Style Grab Bar

Constructed of aluminum tubing, it incorporates a front number plate, which is attached with supplied bolts. This keeps it permanently mounted and is easy to change. Additional number plates, sold separately.
GYT-5TG14-30-AL \$212.95



4. Sport Front Grab Bar

Special ball-burnished, aluminum tube construction. Functional and sporty design.
 Aluminum
GYT-5TG14-10-00 \$214.95
 Black
GYT-5TG14-10-BK \$217.95

5. GYTR Rear Brake Pedal

Strong, yet lightweight billet aluminum construction. Ball-burnished finish with GYTR logo.
GYT-5TG37-23-00 \$196.95



6. GYTR Shift Pedal

Strong, yet lightweight billet aluminum construction. Ball-burnished finish with GYTR logo.
GYT-5TG38-00-00 \$191.95



7. GYTR Pivoting Clutch Lever

This lever is designed with a folding pivot blade that will fold in the event of a tip-over. Pivot ratio mimics stock for excellent performance. Requires the installation of either the GYTR Clutch Perch with Hot Start or GYTR Clutch Perch Assembly, both sold separately.
GYT-5SF37-20-00 \$109.95



8. Swingarm Skid Plate

High-tech design with a brushed aluminum finish. Helps protect and complement the look of the factory aluminum swingarm.
 Fits '06~Current YFZ450
GYT-5TG33-00-AL \$239.95

9. A-Arm Skid Plates

Special ball-burnished, surface-hardened finish. Helps protect the lower A-Arms.
ATV-5TG34-10-00 \$162.95

Many of these accessories are designed exclusively for closed-course competition, these GYTR accessories require maintenance intervals every 20 hours between inspections. This broad range of accessories is designed to help privateers maximize the performance of their Yamaha to be highly competitive at every level. Modifications using these accessories or any other components will void the manufacturer warranty of new vehicles.



1. GYTR Frame Guard

These lightweight guards protect the frame and sub-frame from wear from the rider's boots.

GYT-5TG33-30-AL \$131.95

2. GYTR Front Sprocket Cover

Strong 6061-T6 aluminum construction.

GYT-5TA09-40-AL \$104.95

3. GYTR Light Guards

Durable and lightweight, thermal-formed plastic construction. Helps protect against impact to headlight lenses. Designed to enhance front-end styling.

Translucent Red

GYT-5TG35-00-RD \$93.95

4. GYTR Radiator Cover

Made of high-quality, lightweight aluminum. Expanded aluminum screen construction.

GYT-5TG26-50-AL \$104.95

5. GYTR Graphic Kits

Kits designed to enhance the look of the YFZ450. Kit includes a gripper seat cover with a sponsor patch at rear. Not recommended for winter use.

a. Strobe

GYT-5TGK1-BL-ST \$172.95

b. Flame

GYT-5TGK1-WH-FL \$172.95

6. Front/Rear Number Plate

Designed to bolt to the stock front or rear grab bar. Also easy to mount to the MX Front Grab Bar, sold separately. Requires removal of taillight.

Fits '06 ~ '07 YFZ450

GYT-5TG25-70-WH \$8.95

7. Rear Number Plate

Rubber-mounted. Requires removal of the taillight.

GYT-5TG25-50-BK \$93.95

8. GYTR Number Plate Backing

Includes one front and two rear backgrounds.

Black (Shown)

GYT-5TG25-BG-BK \$47.95

Blue

GYT-5TG25-BG-BL \$47.95

White

GYT-5TG25-BG-WH \$47.95

1. GYTR Clutch Perch Assembly with Hot Start

This billet clutch perch offers superior clutch "feel" and action. It features both a hot start lever for easier clutch and hot start engagement while starting in gear and an easy "on-the-go" clutch adjuster. Requires removal of parking brake, On/Off Switch, High/Low Beam Switch and Starter button for installation.

For closed-course competition only.

GYT-5TA38-30-AL \$251.95



2. GYTR Clutch Perch Assembly

This billet clutch perch offers superior clutch "feel" and action. Features an easy, "on-the-go" clutch adjuster. Requires removal of parking brake, On/Off Switch, High/Low Beam Switch and Starter button for installation.

For closed-course competition only.

GYT-FACTY-AD-00 \$226.95



3. Shock Covers

Helps deflect rocks and debris.

Blue Flame

Front (Sold in pairs)

GYT-FSCFL-BL-05 \$76.95

Rear (Sold individually)

GYT-RSCFL-BL-05 \$39.95

Silver Flame

Front (Sold in pairs)

GYT-FSCFL-SL-05 \$76.95

Rear (Sold individually)

GYT-RSCFL-SL-05 \$39.95



4. NEW! Pro Armor Front Shock Covers

Features a moisture-repellent, nylon fabric with prominent Pro Armor graphics. Covers entire front shocks to protect from debris and moisture. Sold in pairs.

Fits '04-Current YFZ450

ATV-Y0740-52-00 \$39.95

5. GYTR Handlebar Clamp Cover

Printed on scratch-resistant 15-mil vinyl, featuring the Factory Racing logo. 10" long.

GYT-5XC25-18-BL \$30.95

6. GYTR Clutch Perch Wheel

Fits GYTR Clutch Perch with Hot Start and GYTR Clutch Perch Assembly.

GYT-FACTY-AD-WL \$76.95



7. GYTR Grip Donut

Helps prevent blistering.

GYT-5XD22-00-00 \$9.95

8. GYTR Fuel Screw

Precision-machined 6061 billet aluminum.

Allows for easy fuel mixture adjustment.

For closed-course competition only.

GYT-2S275-00-00 \$47.95

9. GYTR Timing Plug

These anodized 6061 billet aluminum plugs replace the stock plastic plugs.

14mm (Centre cover)

Blue

GYT-2S235-14-AL \$32.95

Red

18P-E51B0-V0-00 \$34.95

Black (Not Shown)

5XC-E51B0-V0-00 \$34.95

27mm (Top-dead-centre cover)

Blue

GYT-2S235-27-AL \$32.95

10. GYTR Oil Fill Cap

Anodized, 6061 billet aluminum plug replaces stock plastic cap.

Blue (Shown)

GYT-2S235-01-00 \$35.95

Black

5XC-E53A0-V0-00 \$34.95

11. GYTR Magnetic Drain Plug

Replaces the stock steel drain plug. 60% lighter than stock. Includes a magnet that collects metal shavings to prevent them from circulating in the motor oil.

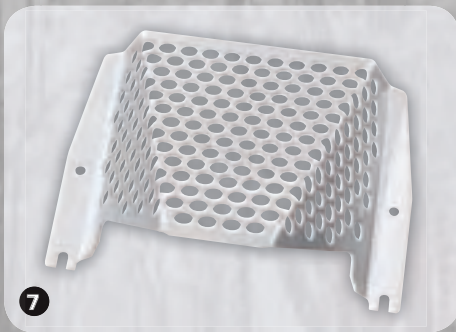
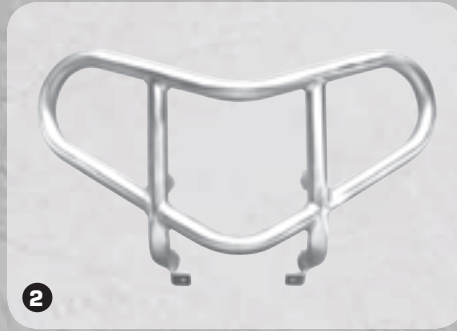
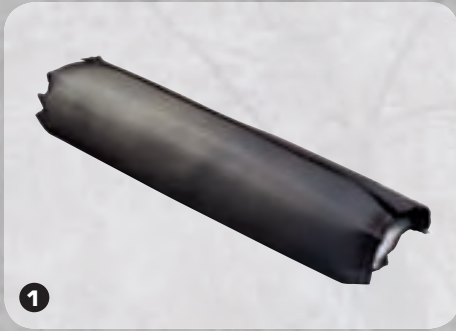
Blue (Shown)

GYT-5XD07-10-AL \$40.95

Red

18P-E51C0-U0-00 \$34.95

Wolverine 450



1. GYTR Oval Muffler Packing Kit
High-quality fibre packing cartridge. Comes on a cardboard sleeve for easy installation.
GYT-5TA93-33-KT \$43.95

2. Front Grab Bar
Made of high-quality aluminum. Features 1-1/4" round tubing.
ABA-3C214-00-00 \$219.95

3. GYTR Spark Arrestor
Designed for GYTR exhaust systems with two-piece end caps.
GYT-5JG93-23-SS \$23.95

4. Rear Rack
Heavy-duty aluminum tube-and-plate construction. Accommodates smaller size coolers.
ABA-3C251-00-00 \$307.95

5. Engine/Frame Skid Plate
Durable yet lightweight aluminum skid plate provides protection against rocks and other objects. Strategically placed holes allow for easy maintenance and efficient mud drainage.
ABA-3C234-00-00 \$239.95

6. Front A-Arm Skid Plates
Lightweight, heavy-duty aluminum plate provides added protection.
ABA-3C234-10-00 \$151.95

7. GYTR Radiator Guard
Made of perforated aluminum for added protection against dents.
ABA-3C226-40-00 \$124.95

8. Rear Differential Skid Plate
Brushed finish, heavy-duty 6061-T6 aluminum. Bolts easily to rear differential for maximum protection.
ABB-4KB34-10-00 \$157.95

9. Tow Hitch
Black powder-coated steel construction. Easy bolt-on installation. Requires 3 bolts (95817-10016-00), sold separately.
5GH-28488-00-00 \$68.49

10. Urban Graphic Kit
Designed to enhance the look of the Wolverine. Kit includes one decal set and one seat cover.
a. Blue Camo (Shown)
ABA-3C225-30-BL \$143.95
b. White and Black Camo
ABA-3C225-30-WH. \$143.95

Many of these accessories are designed exclusively for closed-course competition, these GYTR accessories require maintenance intervals every 20 hours between inspections. This broad range of accessories is designed to help privateers maximize the performance of their Yamaha to be highly competitive at every level. Modifications using these accessories or any other components will void the manufacturer warranty of new vehicles.